



PENNWEST

reserve

R

Table of Contents

| Pg | Name | Model # | Size | Sq Ft |
|---------------------|---------------------|----------------|-------------|--------------|
| Ranch Models | | | | |
| 4 | Generational Suite | 3P2007R | 4268/64 | 2122 |
| 5-7 | The Nextflex Family | | 1777-2150 | |
| 8 | Silverwood | 2P2001R | 2840 | 1093 |
| 9 | Berkshire | 2P2002R | 2844 | 1203 |
| 10 | Firleigh | 2P2003R | 2848 | 1312 |
| 11 | Easton | 2P2004R | 2848 | 1312 |
| 12 | Beechwood | 2P2005R | 2852 | 1421 |
| 13 | Saddlewood | 2P2006R | 2852 | 1421 |
| 14 | Mapleton | 2P2007R | 2852 | 1421 |
| 15 | Kingston | 2P2008R | 2852 | 1421 |
| 16 | Woodbury | 2P2009R | 2856 | 1531 |
| 17 | Rosemont | 2P2010R | 2856 | 1456 |
| 18 | Ashton | 2P2011R | 2856/48 | 1421 |
| 19 | Willowbee | 2P2012R | 2860 | 1640 |
| 20 | Elderberry | 2P2014R | 2860 | 1560 |
| 21 | Elderberry Photos | | | |
| 22 | Willowbrooke | 2P2013R | 2860 | 1640 |
| 23 | Danbury | 2P2016R | 2860 | 1647 |
| 24 | Charlestown | 2P2017R | 2860/52 | 1464 |
| 25 | Hebron | 2P2018R | 2864 | 1749 |
| 26 | Washington | 2P2019R | 2864/60 | 1676 |
| 27 | Bismarck | 2P2021R | 2868 | 1768 |
| 28 | Carthage | 2P2023R | 2872 | 1852 |
| 29 | Branston | 2P2024R | 2872/64 | 1704 |
| 30 | Vienna | 2P2025R | 2876 | 2077 |
| 31 | Birchton | 2P2026X | 3238 | 1178 |
| 32 | Goldsboro | 3P2001R | 4242/36 | 1253 |
| 33 | Sandalwood | 3P2002R | 4252 | 1781 |
| 34 | Hollingsworth | 3P2003R | 4252/44 | 1646 |
| 35 | Chesterton | 4P2001R | 4252 | 1995 |
| Cape Models | | | | |
| 37 | Nantucket | 2PC2001R | 2836 | 883 |
| 38 | Bayshore | 2PC2002R | 2840 | 1093 |
| 39 | Wilmington | 2PC2003R | 2840 | 1093 |
| 40 | Bayview | 2PC2004R | 2848 | 1312 |
| 41 | Norwick | 2PC2005R | 2848 | 1312 |
| 42 | Baycrest | 2PC2006R | 2852 | 1421 |
| 43 | Livingston | 2PC2007R | 2856 | 1531 |



French Country Oak
Mission Flat Panel



Barnwood Oak
Mission Flat Panel



Warm Sienna
Mission Flat Panel



Hickory
Raised Panel



Shadow Grey
Mission Flat Panel



White
Mission Flat Panel



Precision Cut and Dadoed Construction Fastened and Hot Glued - Ensures a Long Lasting and Square Cabinet Box

3/4 Overlaid Cabinet Doors & Drawer - Limited Exposure of Cabinet Stiles

3/4" Thick Shelving with Finished Edges - Prevents Warping of Shelves

Base and Wall Cabinet Adjustable Shelving - Fit Your Lifestyle

3/4" Face Frames - Durable and Securely Holds Fasteners for Long Lasting Use

Pocket Screws - Ensure a Strong and Square Frame

Dove-Tail Constructed Drawers - Superior Drawer Strength

Undermount Soft Close Drawer Guides

Concealed and Recessed Hinges - Superior Door Strength

Recessed Toe Kick - Work at Counters with Ease

No Exposed Hanging Cleats- More Storage and Cleaner Look

KCMA Testing

- Overhead Cabinets Rated to 500 pound Capacity
- Drawers Opened 28,000 Times with Weight
- Cabinet Doors Opened 25,000 Times
- Extreme Testing of Cabinet Finish



Evermore Custom Cabinets endure a series of rigorous tests, measuring structural integrity. Cabinet doors, drawers and even the finish are tested before earning the KCMA Cabinet Certification.

Visit www.KCMA.org
for more information

Generational Suite

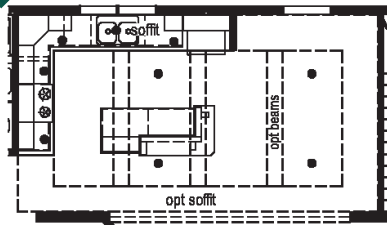
This home is designed specifically for multi-generational living. Integral to the layout of this home is an all inclusive residence including its own entry, living area, kitchen, bedroom, and bath. Perfect for a family member needing extra care, a teen wanting their own space, or an out of town guest not wanting to intrude. Consider this home or custom design your own when you foresee the need for extra space.



3P2007R

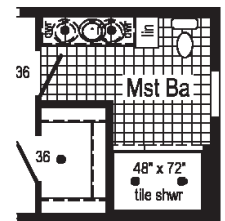
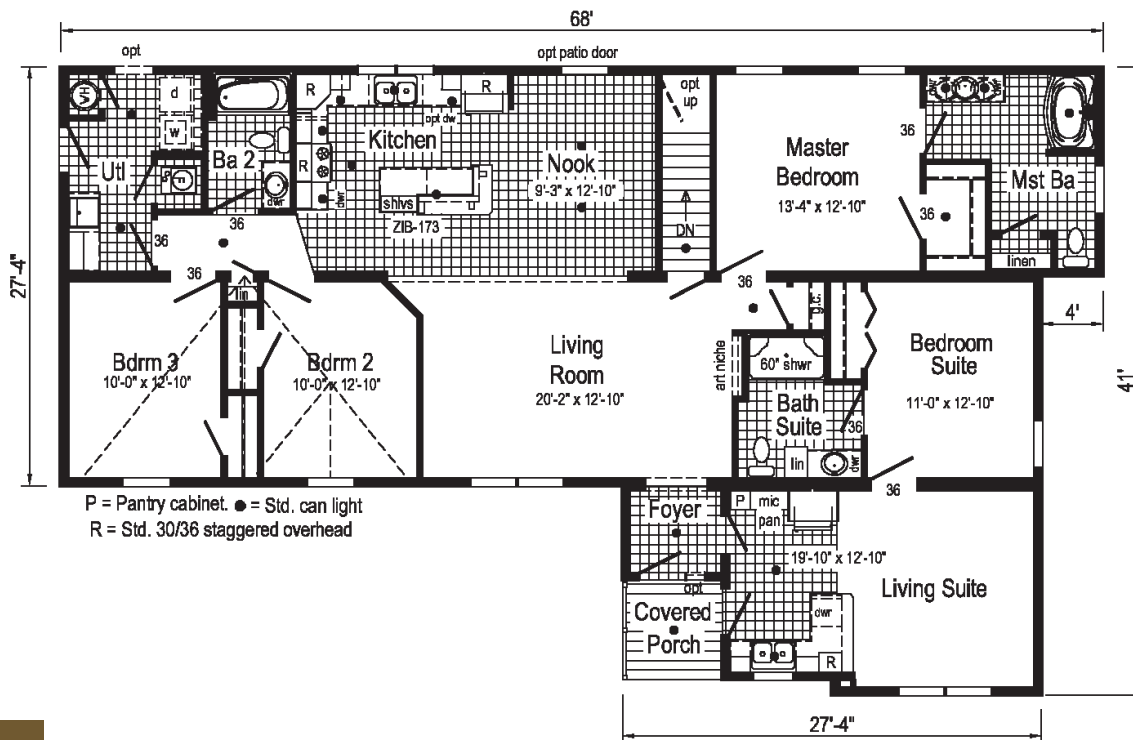
42x68/64 Approx. 2122 sq ft

Some features shown may be optional or added on-site by others.

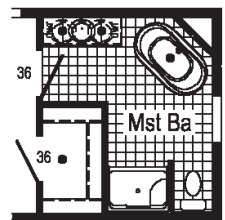


Kitchen with Soffit

Opt. Kitchen & Nook
Drywall Soffit and Beams



Optional
4' x 6' Tile
Shower



Optional Glamour
Bath

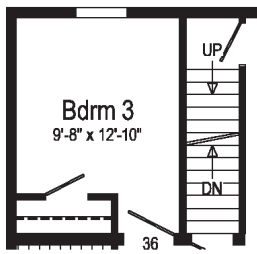
Nextflex Ranch



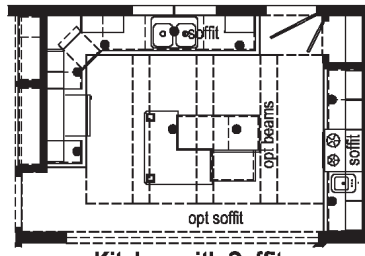
2P2020R

28x66/64 Approx. 1777 sq ft

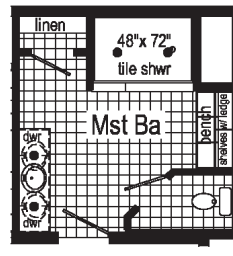
Some features shown may be optional or added on-site by others.



Optional Attic Stairs

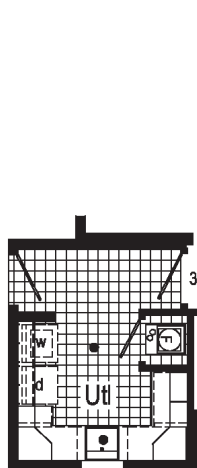
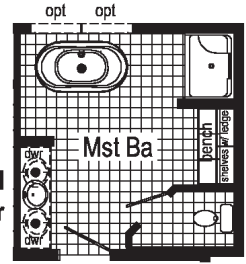


Kitchen with Soffit
Opt. Kitchen Drywall Soffit & Beams

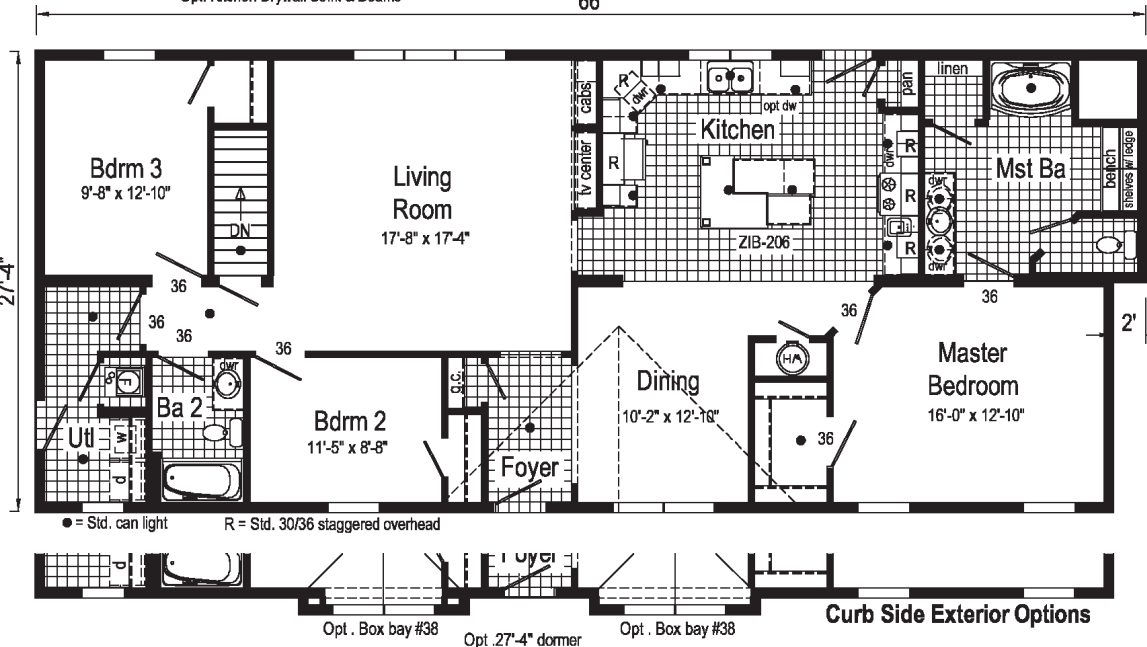


Optional 4'x6' Walk-In Tile Shower

Optional Glamour Bath



Optional Extended Utility Room



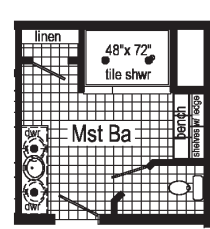
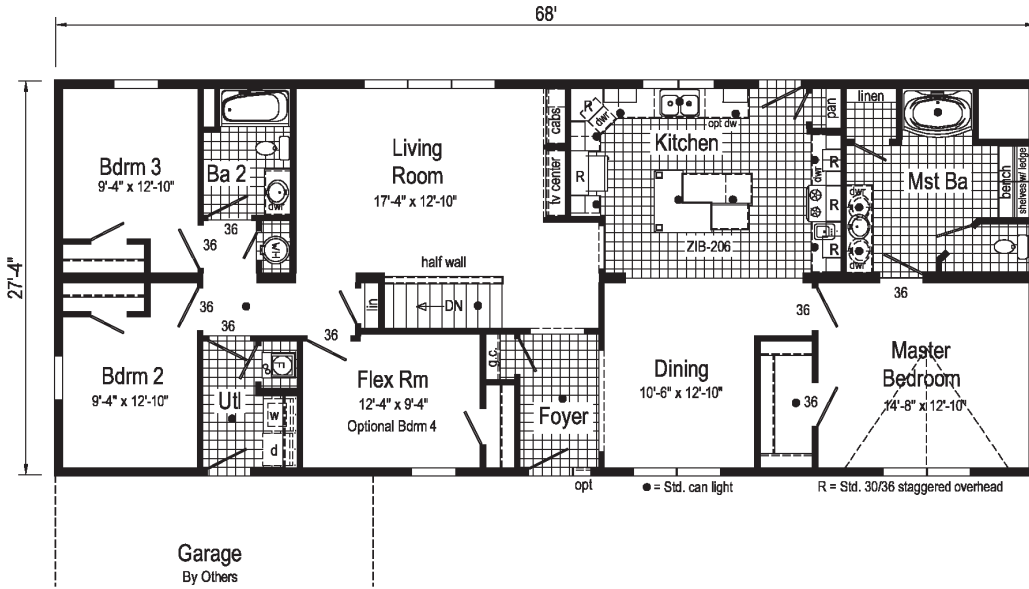
Curb Side Exterior Options

Quattro

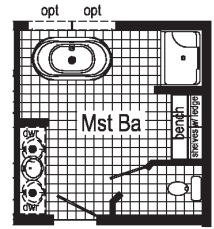
2P2022R

28x68 Approx. 1859 sq ft

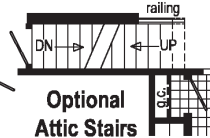
The Nextflex



Optional 4'x6' Walk-In Tile Shower

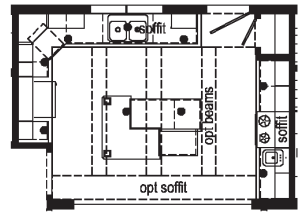


Optional Glamour Bath



Optional Attic Stairs

(omits lin)
Only available with 9/12 or 12/12 roof

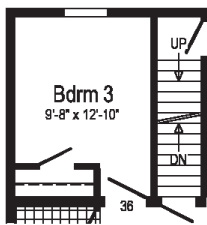


Kitchen with Soffit
Opt. Kitchen Drywall Soffit and Beams.

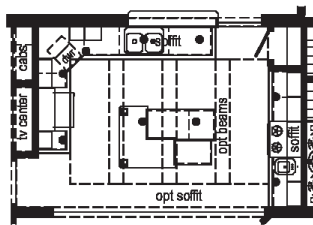
Entertainer

3P2006R

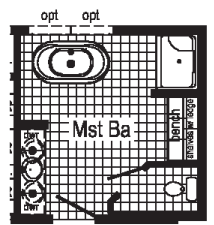
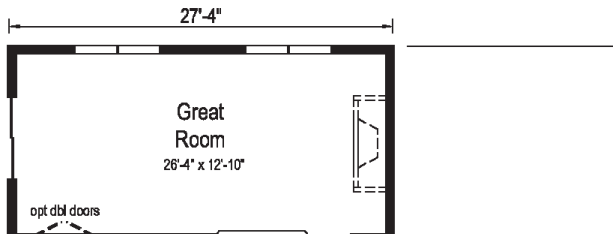
42x66/64 Approx. 2150 sq ft



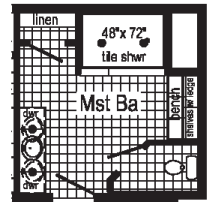
Optional Attic Stairs



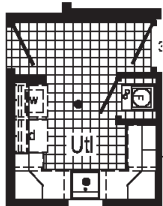
Kitchen with Soffit
Opt. Kitchen Drywall Soffit & Beams



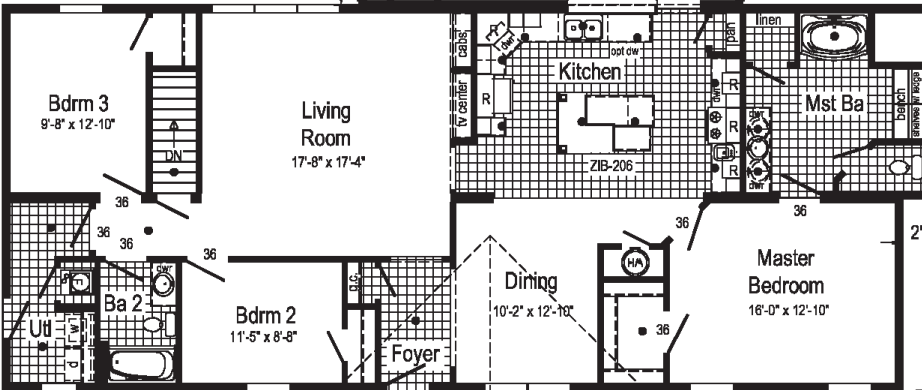
Optional Glamour Bath



Optional 4'x6' Walk-In Tile Shower



Optional Extended Utility Room

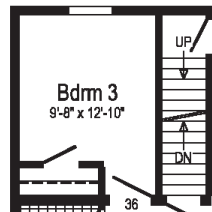


● = Std. can light R = Std. 30/36 staggered overhead

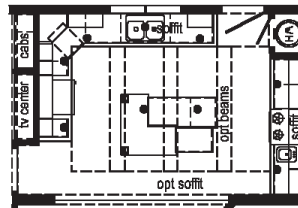


Curb Side Exterior Options

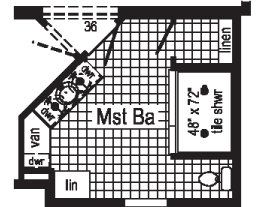
Family



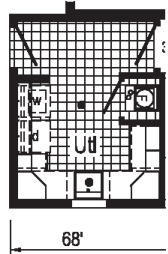
Optional
Attic Stairs



Kitchen with Soffit
Opt. Kitchen Drywall Soffit & Beams



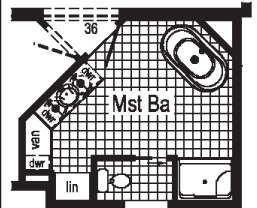
Optional
4'x6' Walk-In
Tile Shower



Optional Extended
Utility Room



● = Std. can light
R = Std. 30/36 staggered overhead

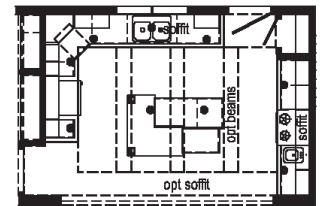
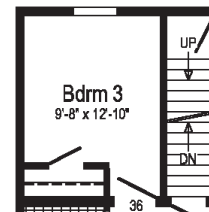


Optional
Glamour
Bath

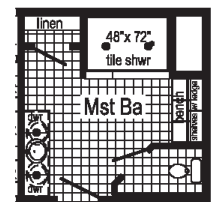
Majestic Master

3P2004R
42x64 Approx. 2105 sq ft

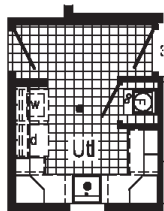
Optional
Attic Stairs



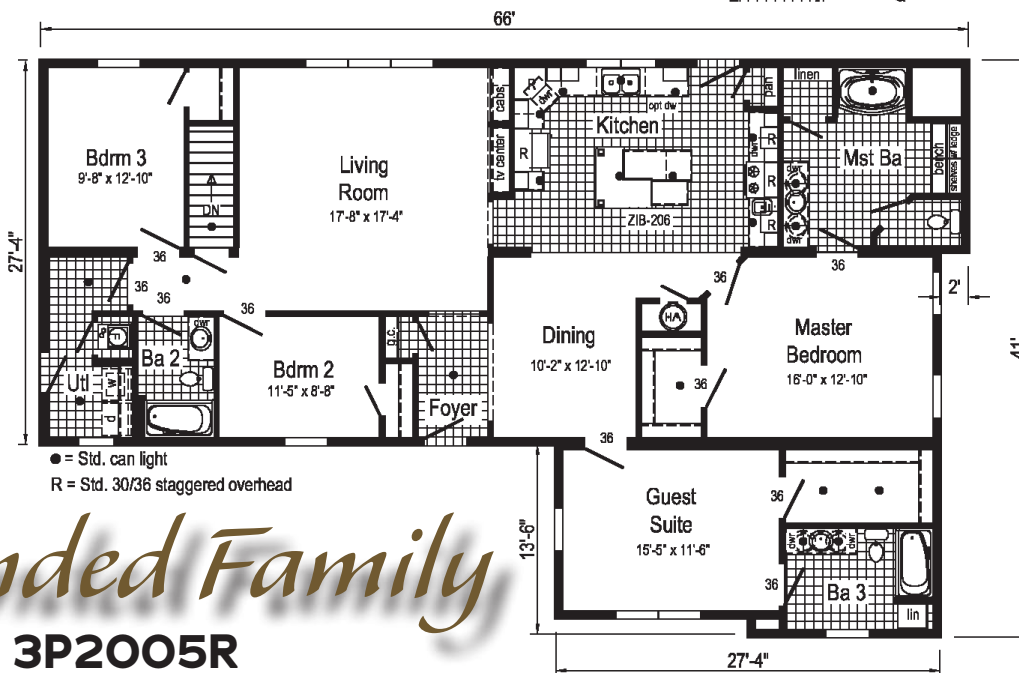
Kitchen with Soffit
Opt. Kitchen Drywall Soffit & Beams



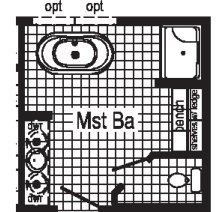
Optional
4'x6' Walk-In
Tile Shower



Optional Extended
Utility Room



● = Std. can light
R = Std. 30/36 staggered overhead



Optional
Glamour

Extended Family

3P2005R
42x66/64 Approx. 2132 sq ft

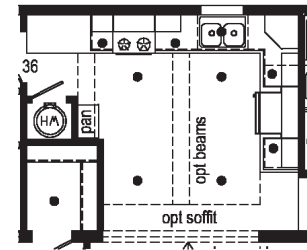
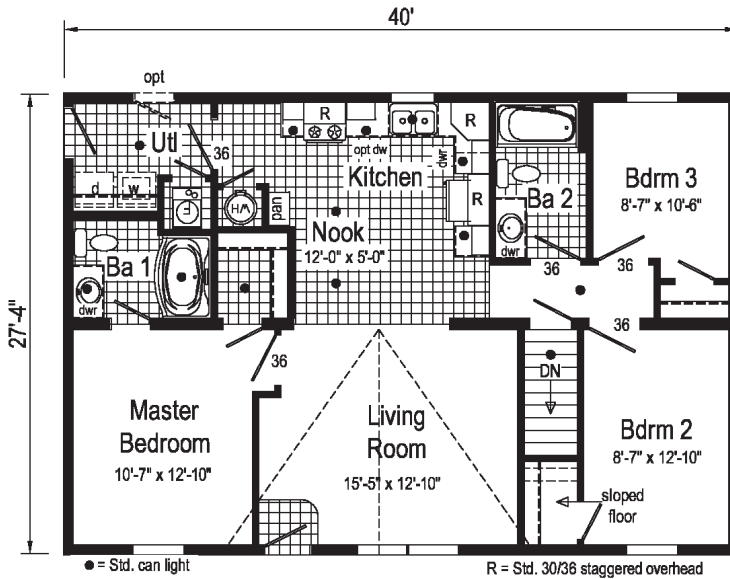
Silverwood



2P2001R

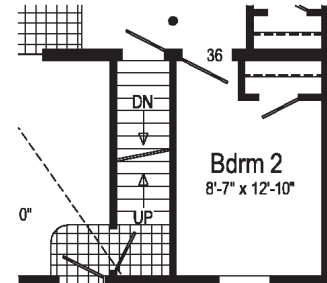
28x40 Approx. 1093 sq ft

Some features shown may be optional or added on-site by others.



Kitchen with Soffit

Opt. Kitchen & Nook Drywall Soffit and Beams

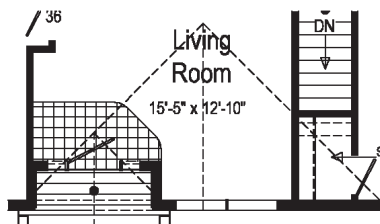


Optional Attic Stairs

Moves front exterior door & living room windows.
Opt. Recessed Covered Entry with Columns not Available

Opt. Recessed Covered Entry with Columns

Moves living room windows.



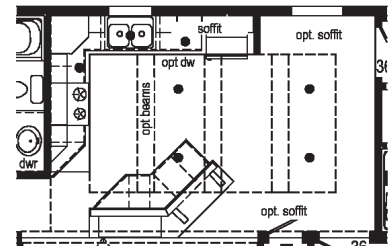
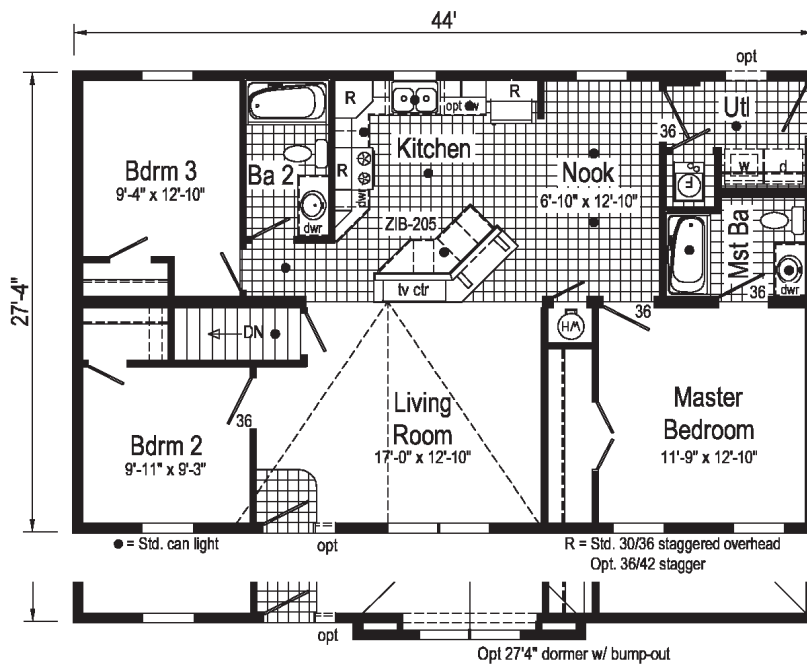
Berkshire



2P2002R

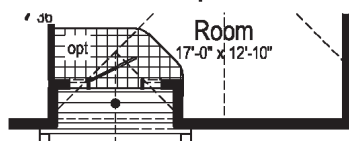
28x44 Approx. 1203 sq ft

Some features shown may be optional or added on-site by others.



Kitchen with Soffit
Opt Kitchen & Nook Drywall Soffit and Beams.

Curb Side Exterior Options



Opt. Recessed Covered Entry with Columns
Moves living room windows.

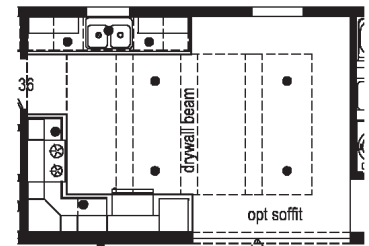
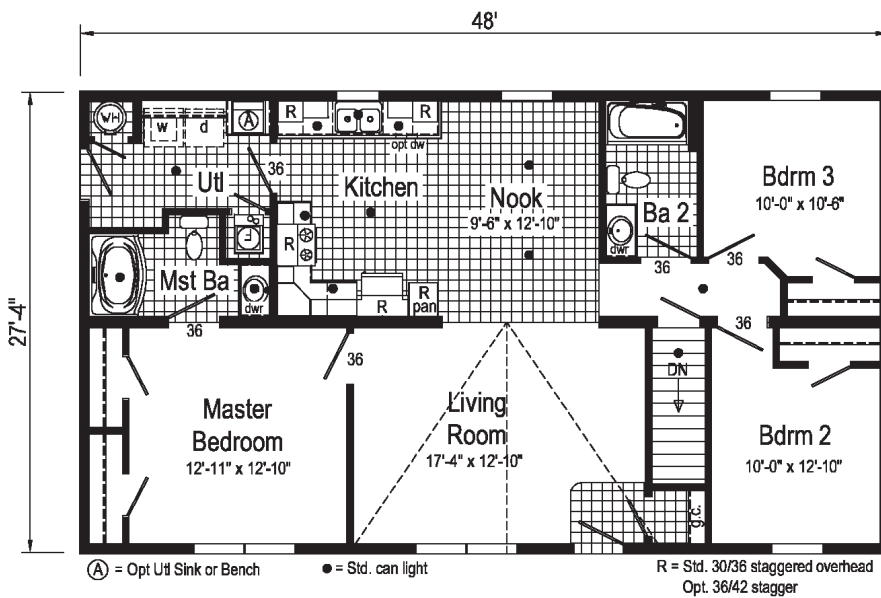
Firleigh



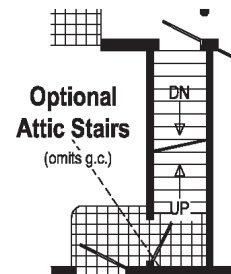
2P2003R

28x48 Approx. 1312 sq ft

Some features shown may be optional or added on-site by others.



Kitchen with Soffit
 Opt. Kitchen & Nook Drywall Soffit and Beams



Opt. Recessed Covered Entry with Columns
 (omits g.c.)

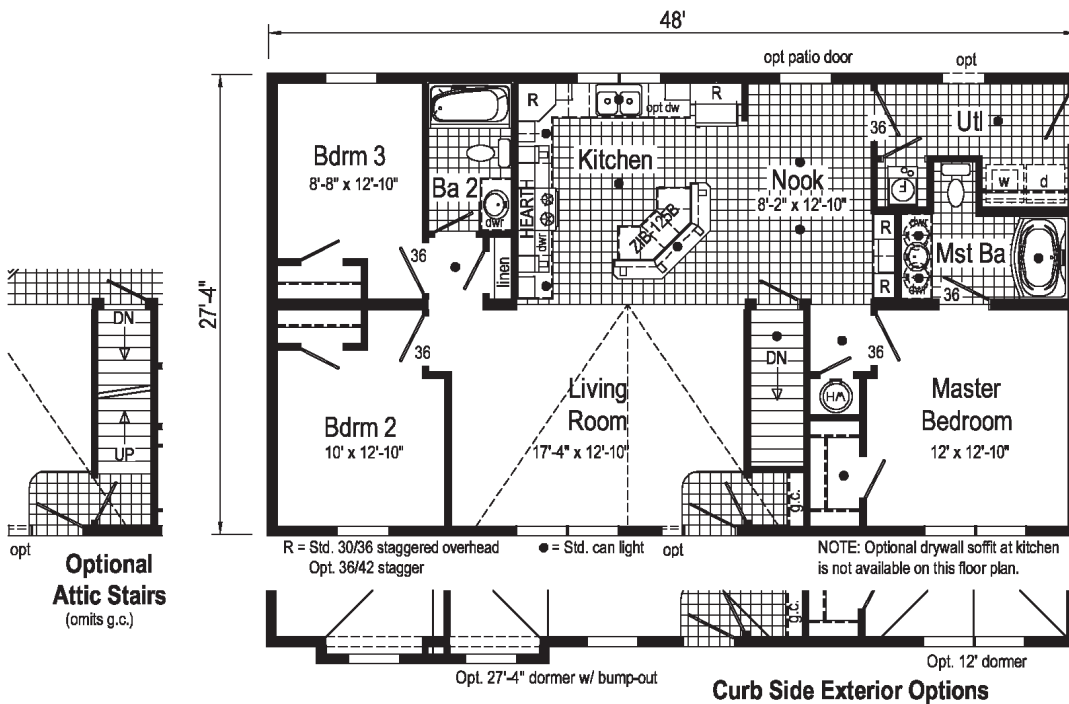
Easton



2P2004R

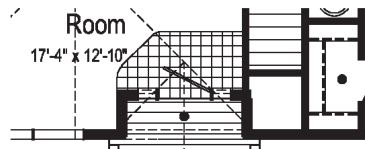
28x48 Approx. 1312 sq ft

Some features shown may be optional or added on-site by others.

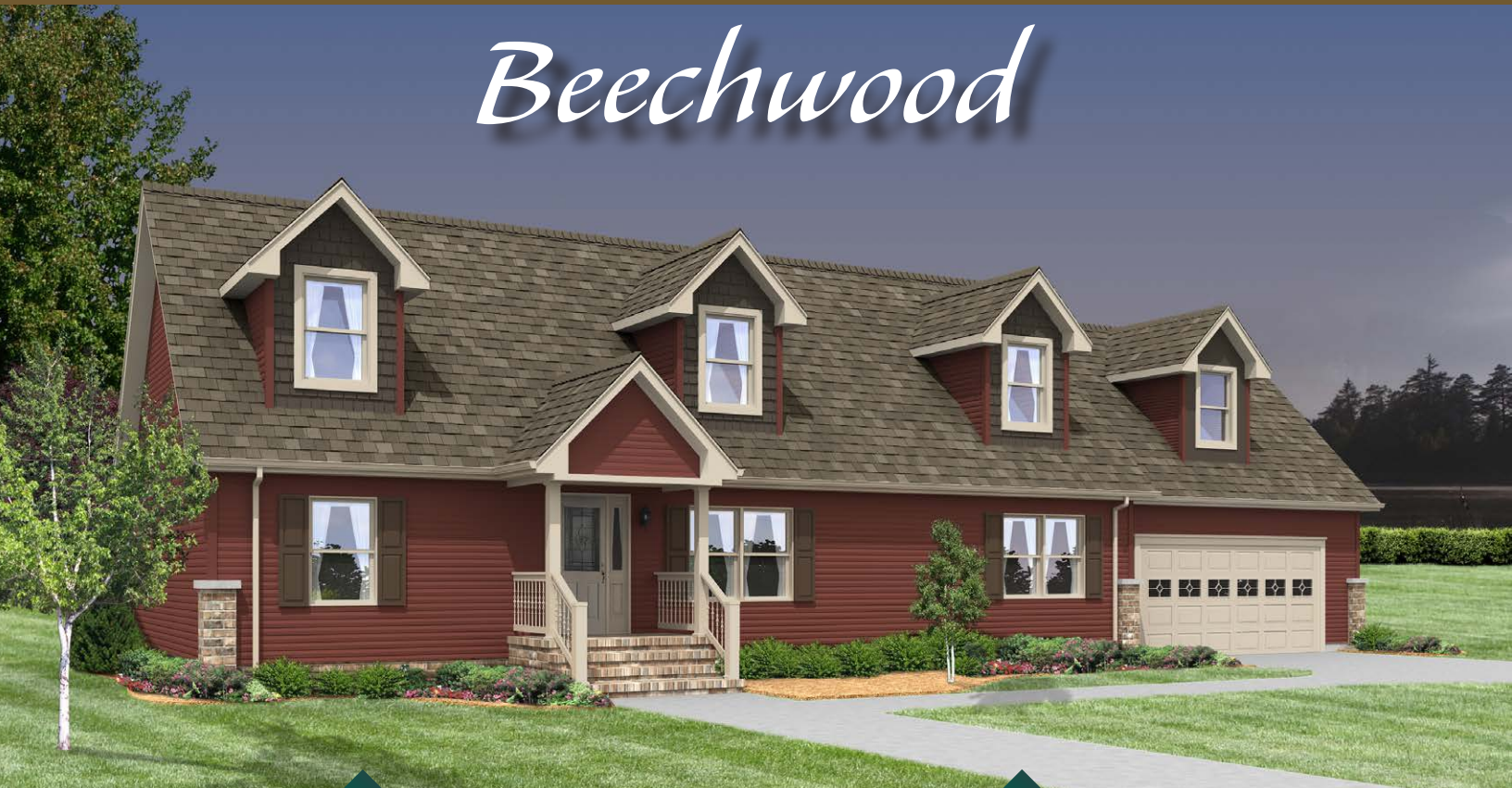


Opt. Recessed Covered Entry with Columns

Moves living room windows.
Omits Guest Closet.



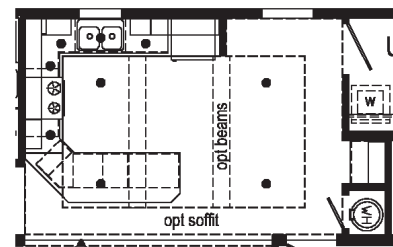
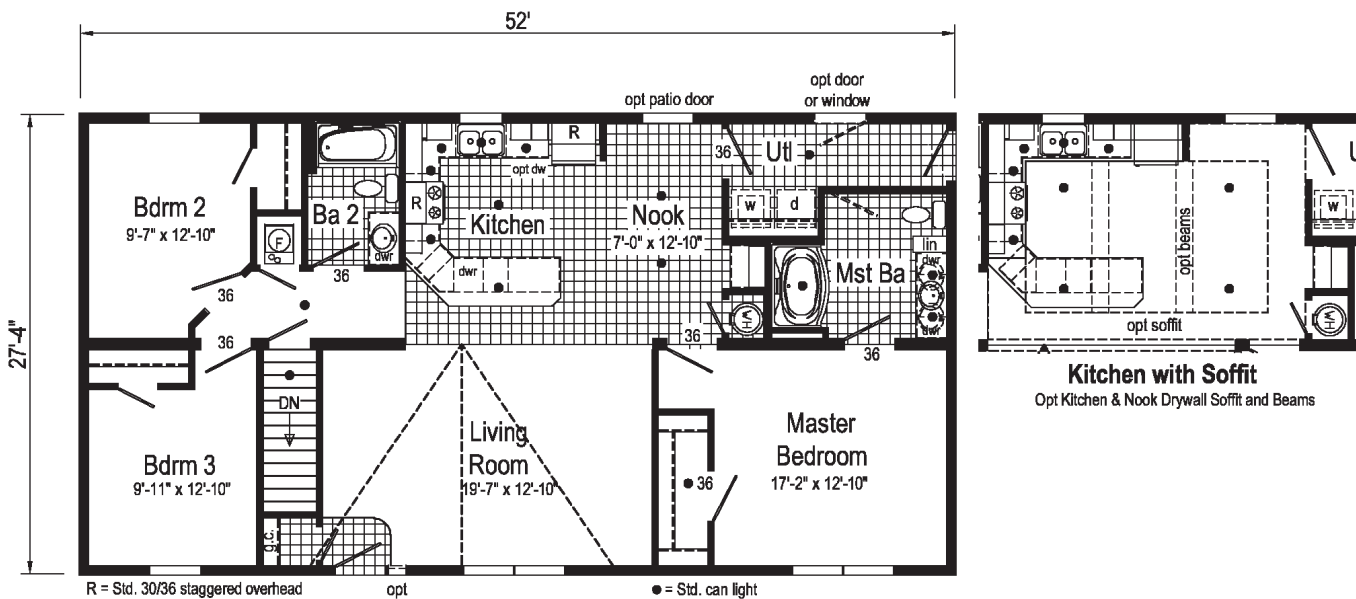
Beechwood



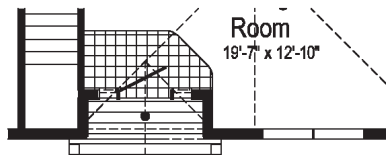
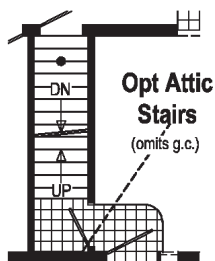
2P2005R

28x52 Approx. 1421 sq ft

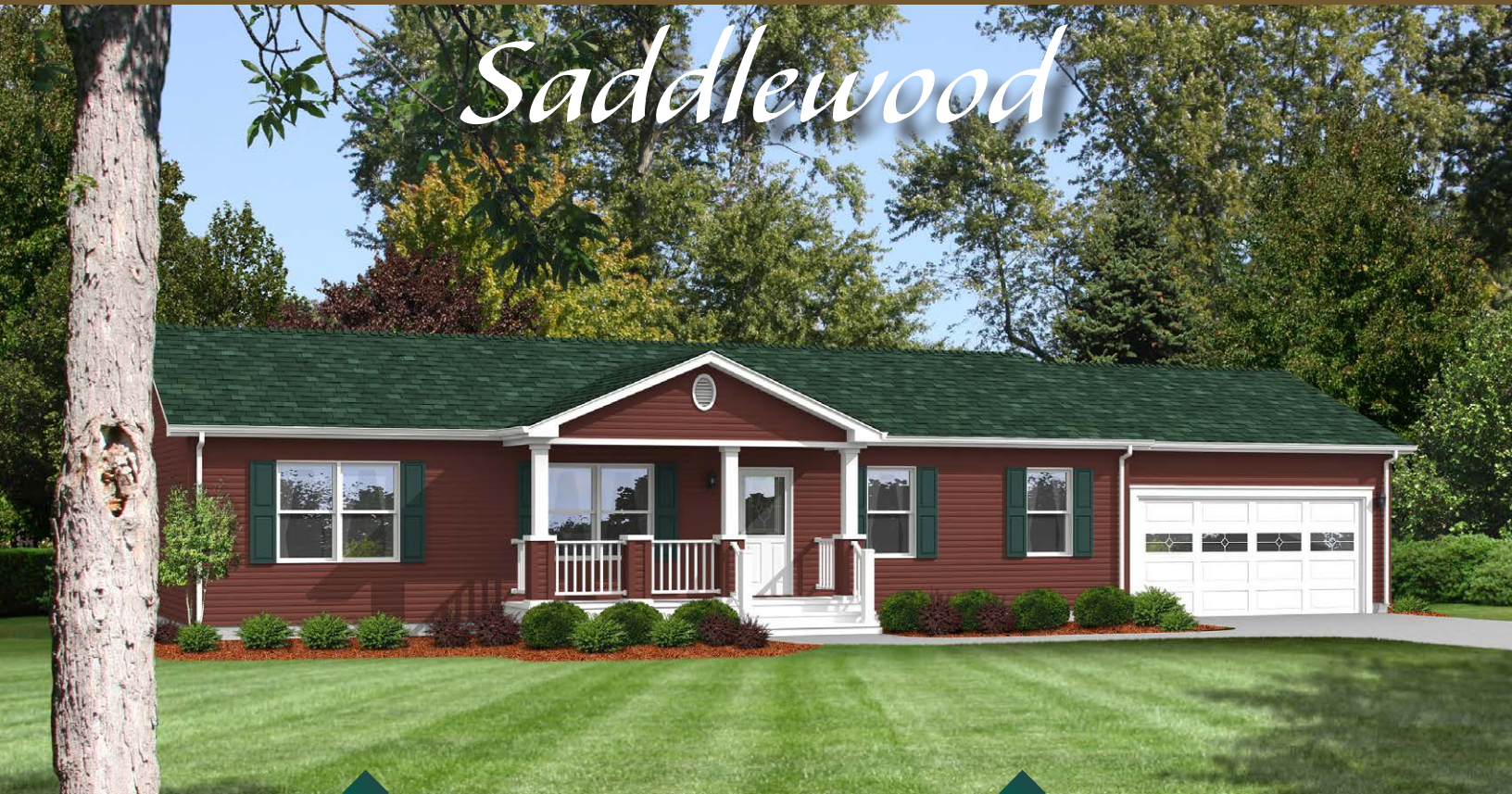
Some features shown may be optional or added on-site by others.



Kitchen with Soffit
 Opt Kitchen & Nook Drywall Soffit and Beams



Saddlewood



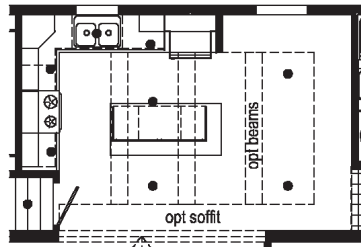
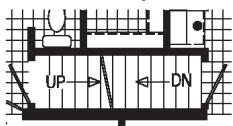
2P2006R

28x52 Approx. 1421 sq ft

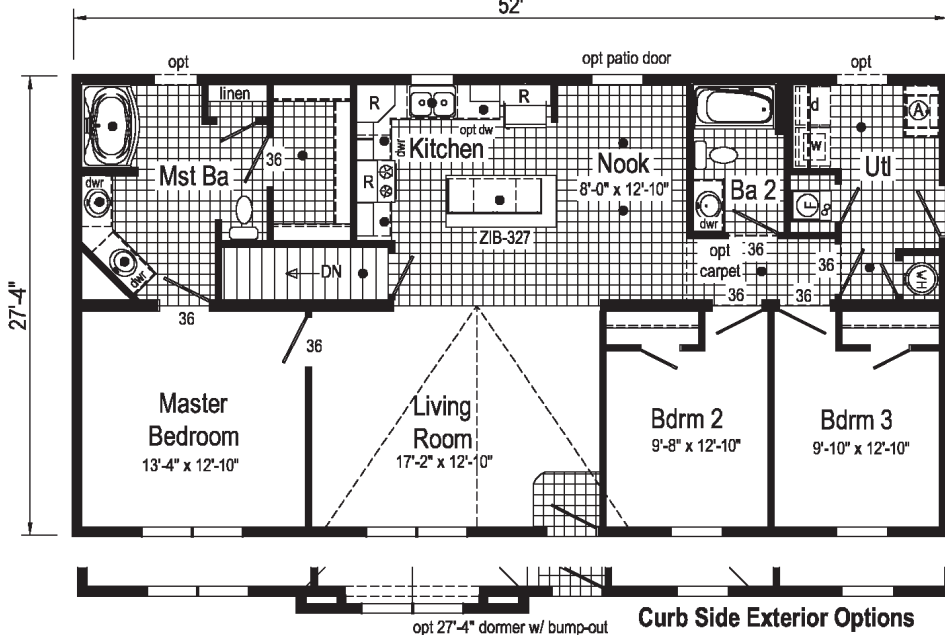
Some features shown may be optional or added on-site by others.

Opt Attic Stairs

Only available w/ 8' ceiling ht.

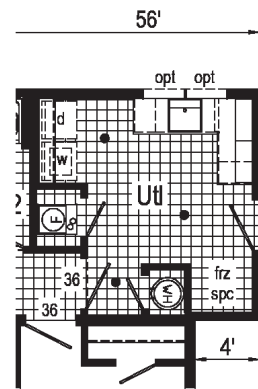


Kitchen with Soffit
Opt. Kitchen & Nook Drywall Soffit and Beams.

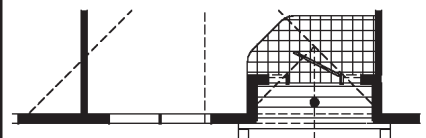


Curb Side Exterior Options

opt 27'-4" dormer w/ bump-out



Optional Extended Utility



Opt. Recessed Covered Entry with Columns

Moves living room windows.

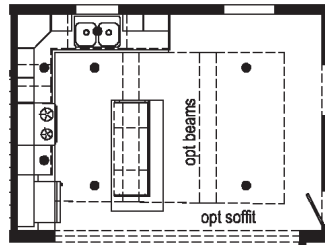
Mapleton



2P2007R

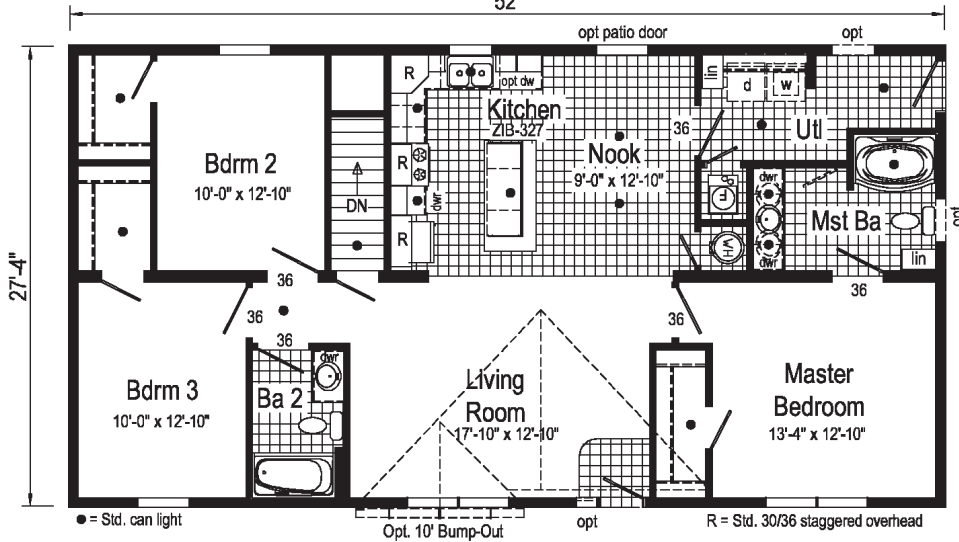
28x52 Approx. 1421 sq ft

Some features shown may be optional or added on-site by others.



Kitchen with Soffit

Opt. Kitchen and Nook Drywall Soffit and Beams



Opt. Recessed Covered Entry with Columns

Moves living room windows.

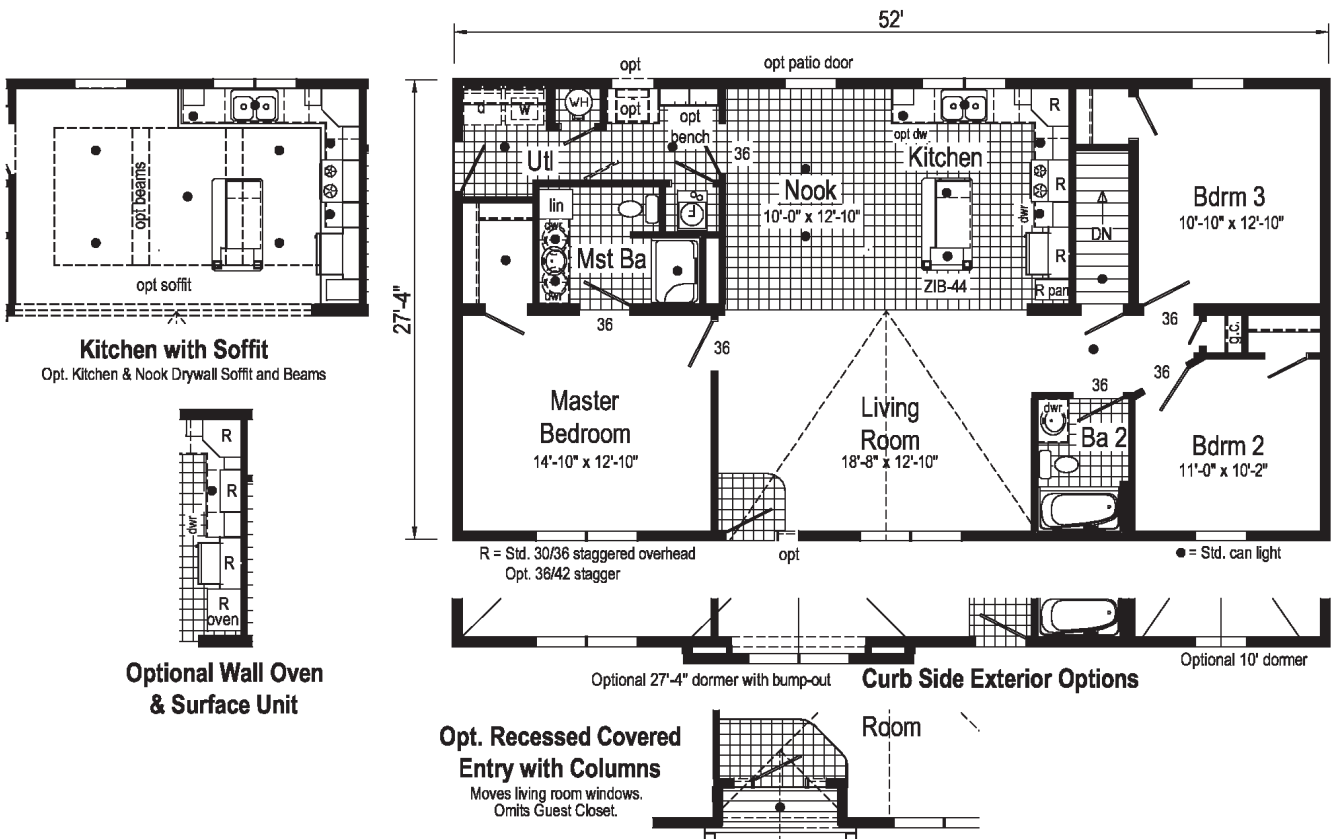
Kingston



2P2008R

28x52 Approx. 1421 sq ft

Some features shown may be optional or added on-site by others.



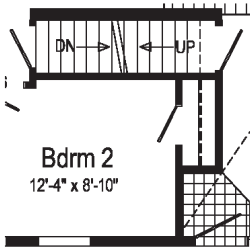
Woodbury



2P2009R

28x56 Approx. 1531 sq ft

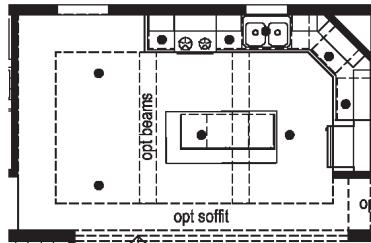
Some features shown may be optional or added on-site by others.



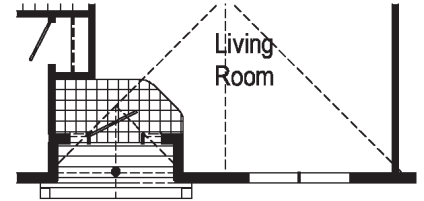
Bdrn 2
12'-4" x 8'-10"

Opt Attic
Stairs

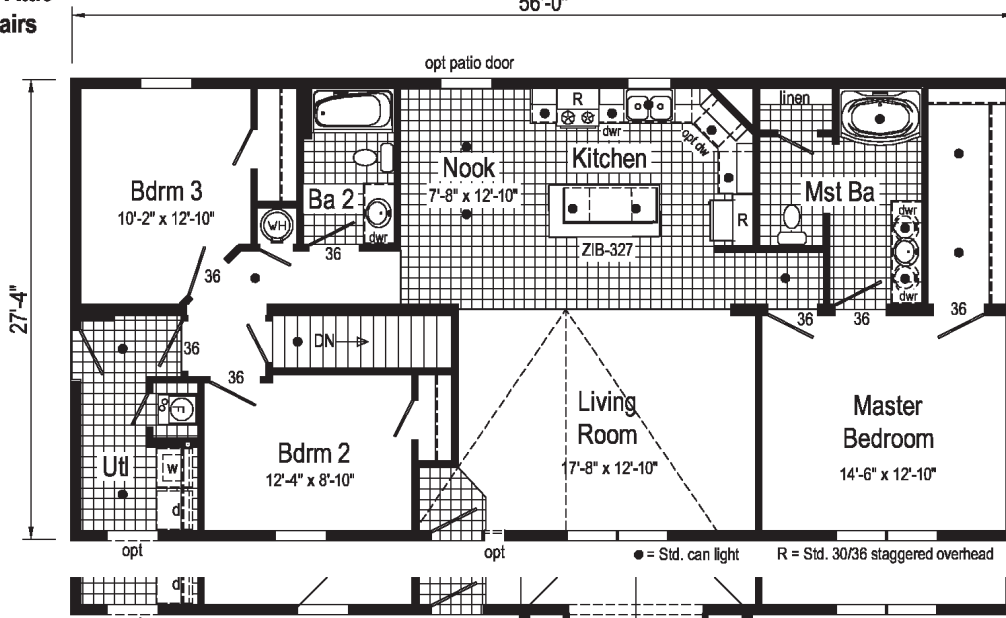
**Kitchen
with Soffit**
Opt. Kitchen & Nook
Drywall Soffit and Beams



56'-0"



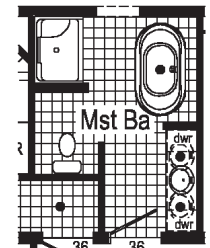
Opt. Recessed Covered
Entry with Columns



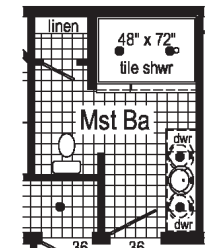
27'-4"

Curb Side Exterior Options

opt. 27'-4" dormer w/ bump-out



Optional Glamour Bath
(omits linen)



Optional 4'x6'
Walk-In Tile Shower

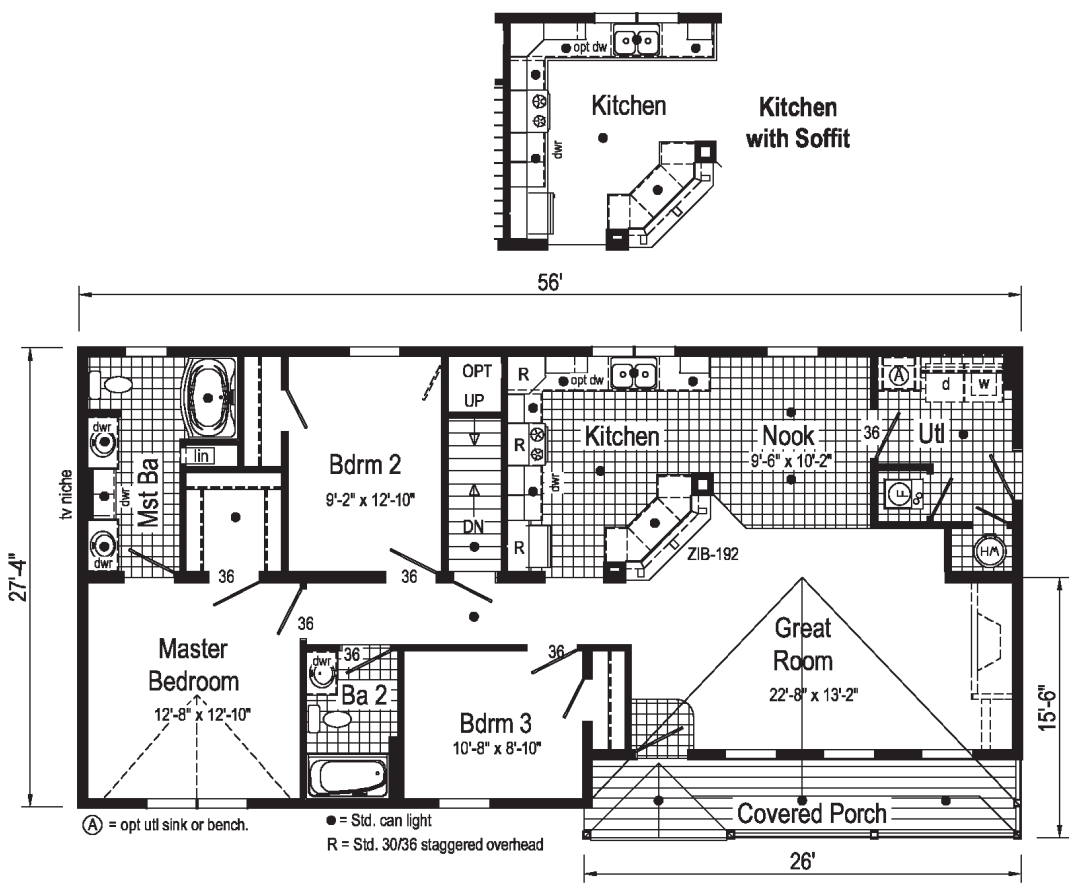
Rosemont



2P2010R

28x56 Approx. 1456 sq ft

Some features shown may be optional or added on-site by others.



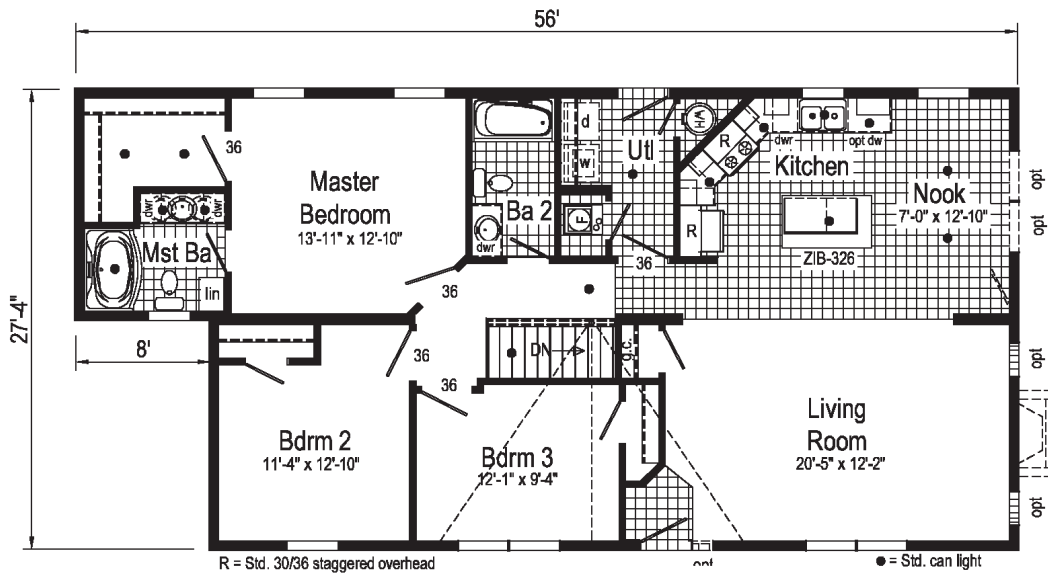
Ashton



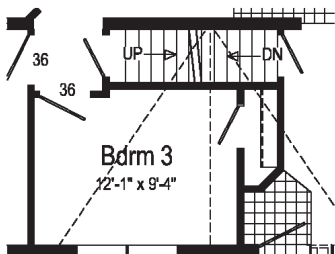
2P2011R

28x56/48 Approx. 1421 sq ft

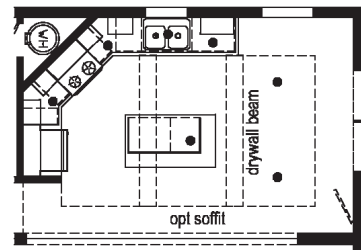
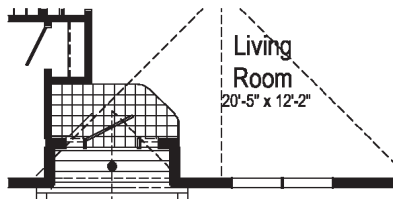
Some features shown may be optional or added on-site by others.



Opt Attic Stairs
(omits g.c.)
Only Available w/ 8' ceiling ht.



Opt. Recessed Covered Entry with Columns



Kitchen with Soffit
Opt. Kitchen & Nook Drywall Soffit and Beams

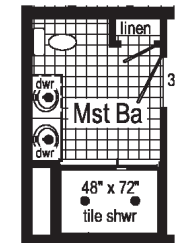
Willowbee



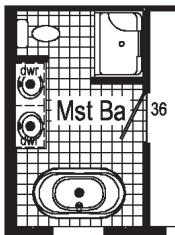
2P2012R

28x60 Approx. 1640 sq ft

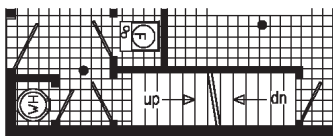
Some features shown may be optional or added on-site by others.



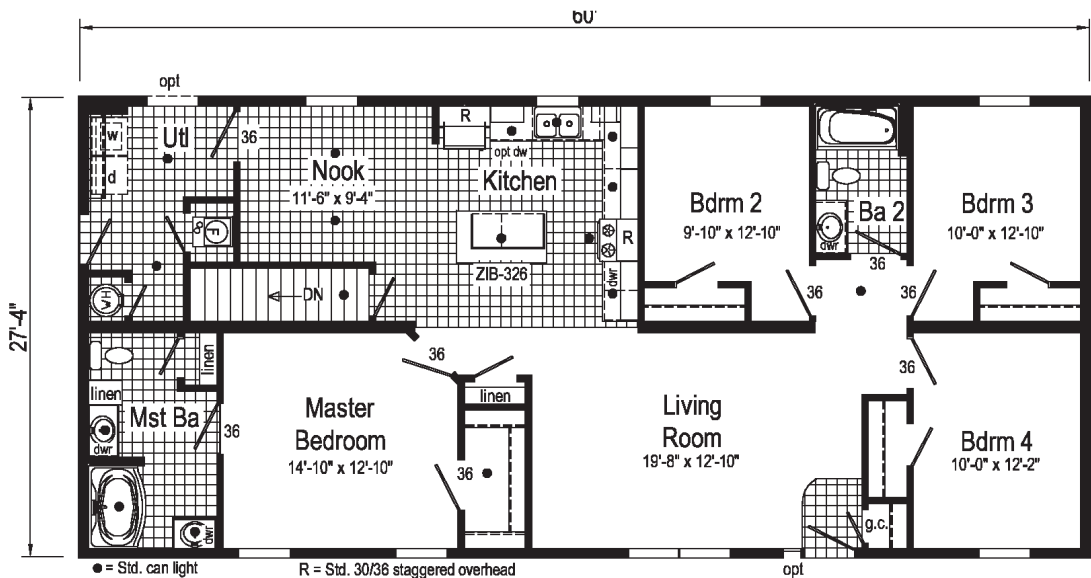
Optional
4'x6' Walk-In
Tile Shower



Optional
Glamour
Bath
(omits linen)



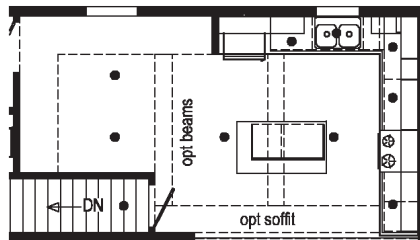
Opt Attic Stairs



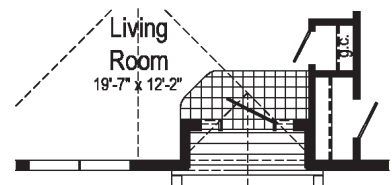
● = Std. can light

R = Std. 30/36 staggered overhead

opt



Kitchen with Soffit
Opt. Kitchen & Nook Drywall Soffit and Beams



**Opt. Recessed Covered
Entry with Columns**

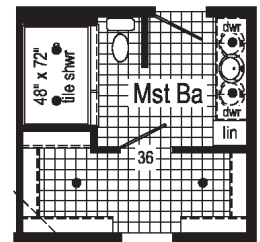
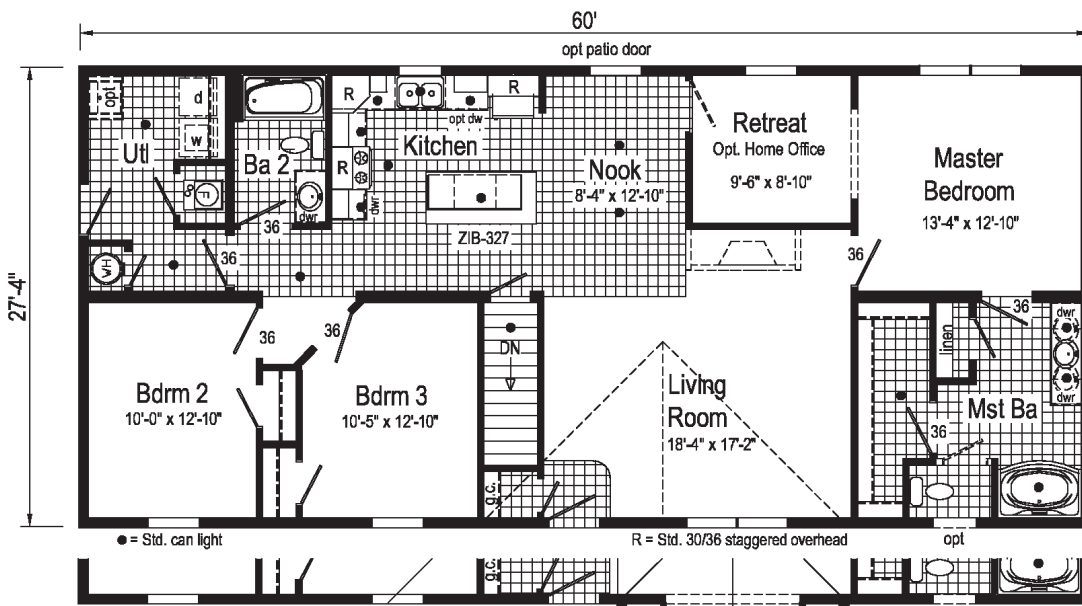
Elderberry



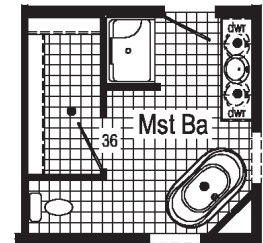
2P2014R

28x60 Approx. 1560 sq ft

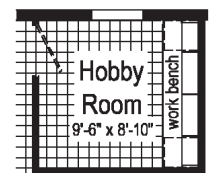
Some features shown may be optional or added on-site by others.



Optional
4'x6' Walk-In
Tile Shower

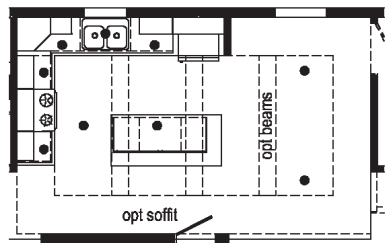


Optional Glamour Bath
(omits linen)

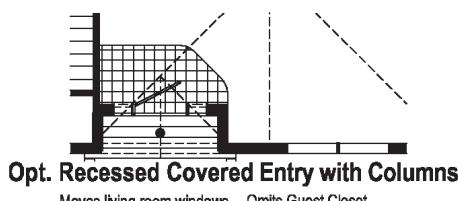


Optional
Hobby Room
(replaces retreat)

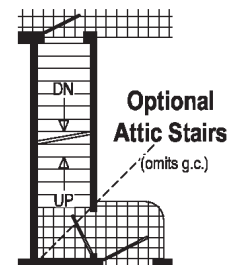
Curb Side Exterior Options



Kitchen with Soffit
Opt. Kitchen & Nook Drywall Soffit & Beams



Opt. Recessed Covered Entry with Columns
Moves living room windows. Omits Guest Closet.

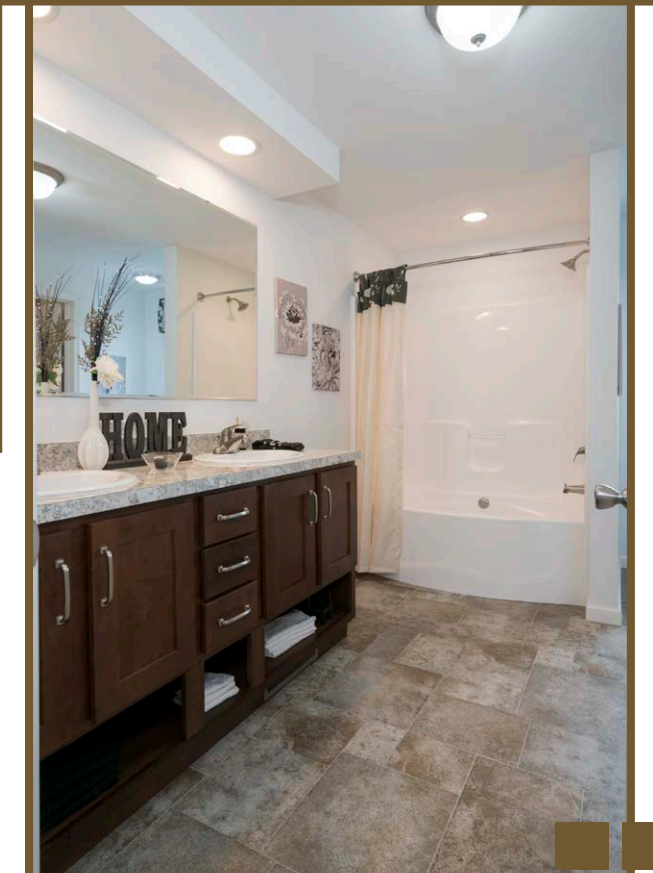
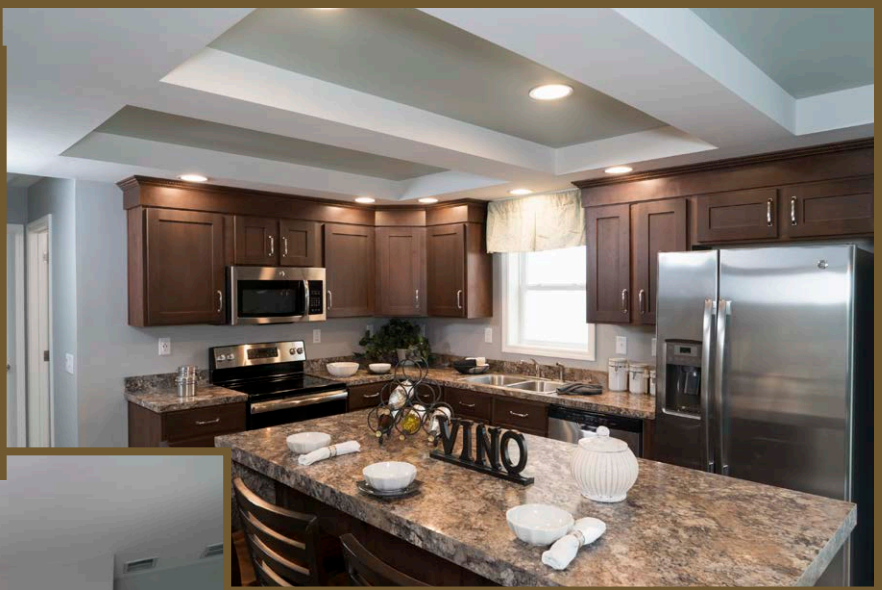
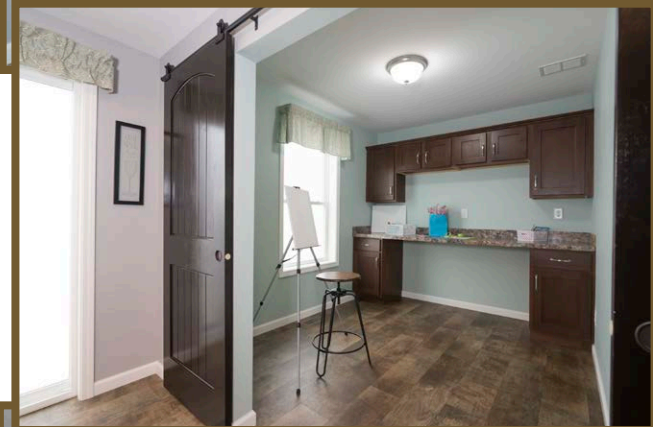
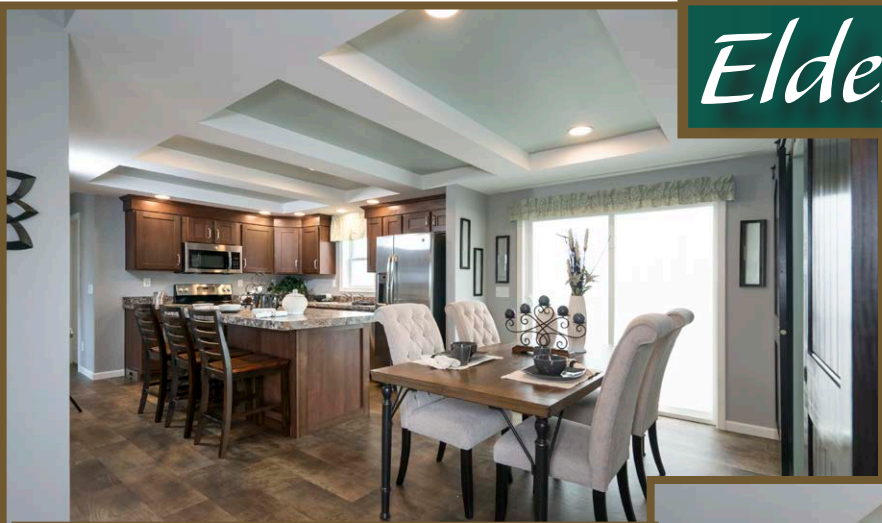


Optional Attic Stairs
(omits g.c.)

Elderberry Photos



Scan to Watch Video!



Willowbrooke



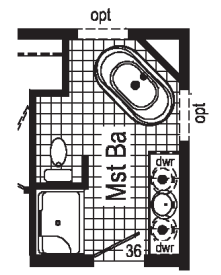
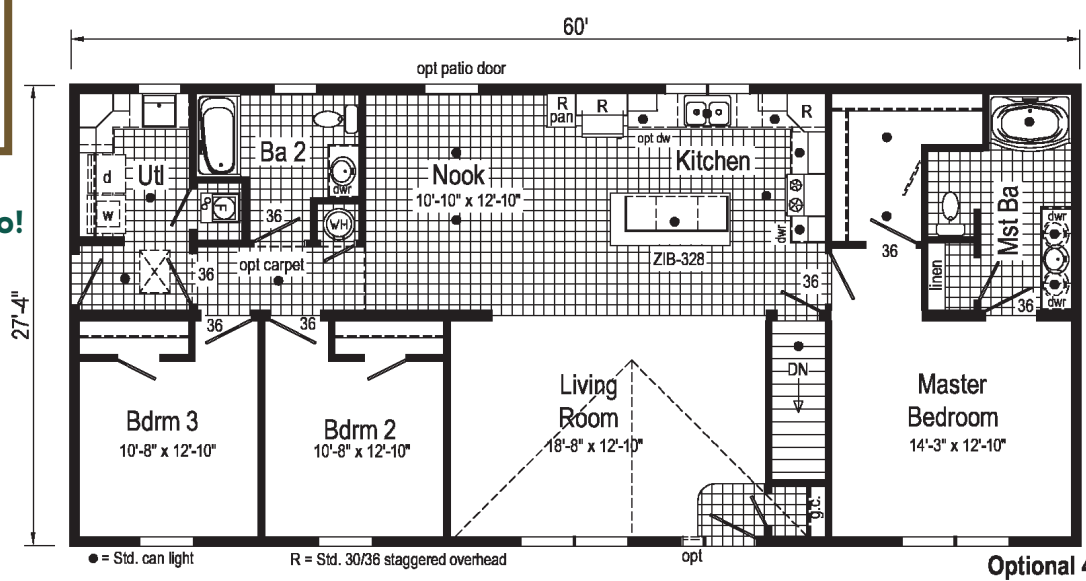
2P2013R

28x60 Approx. 1640 sq ft

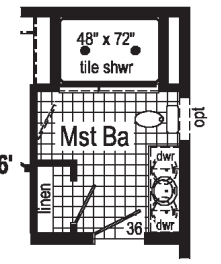
Some features shown may be optional or added on-site by others.



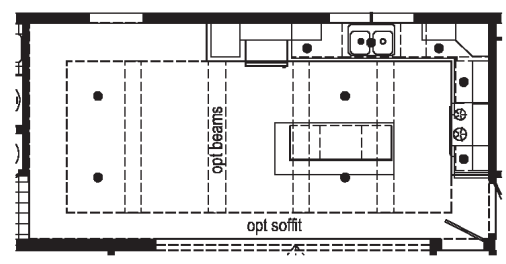
Scan to Watch Video!



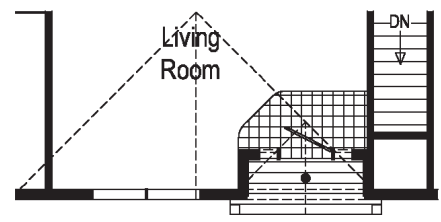
Optional Glamour Bath (omits linen)



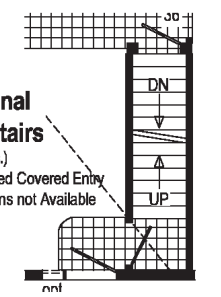
Optional 4' x 6' Walk-In Tile Shower



Kitchen with Soffit
Opt Kitchen & Nook Drywall Soffit and Beams



Opt. Recessed Covered Entry with Columns
Moves living room windows.



Optional Attic Stairs (omits g.c.)
Opt. Recessed Covered Entry with Columns not Available

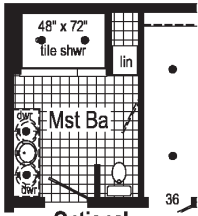
Danbury



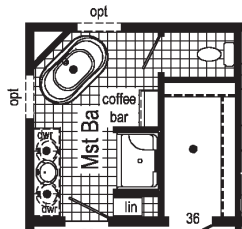
2P2016R

28x60 Approx. 1647 sq ft

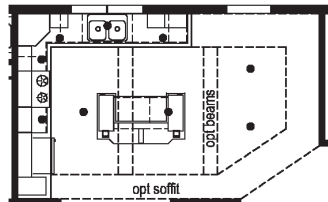
Some features shown may be optional or added on-site by others.



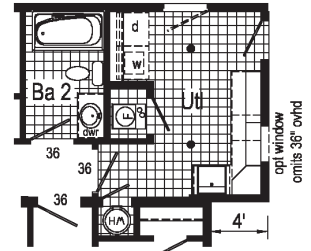
Optional 4'x6' Walk-In Tile Shower
(omits coffee bar)



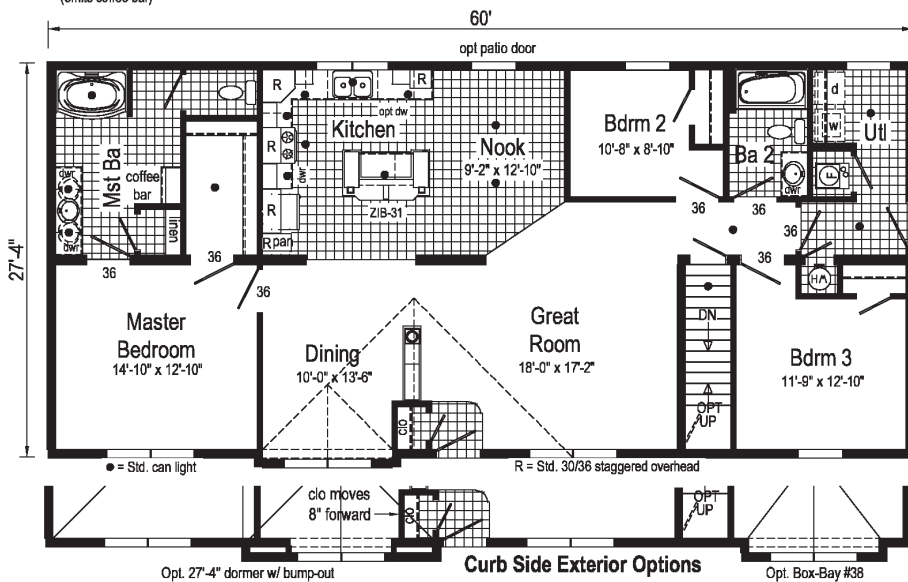
Optional Glamour Bath



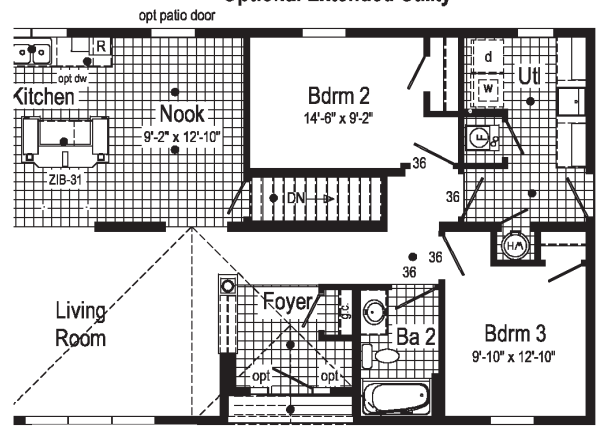
Kitchen with Soffit
Opt. Kitchen & Nook Drywall Soffit and Beams



Optional Extended Utility



Curb Side Exterior Options



Optional Larger Utility with Cabinets & Recessed Entry Foyer
Omits Dining & Relocates Stairwell & Bath 2



Optional Recessed Entry Foyer
Rep. Dining

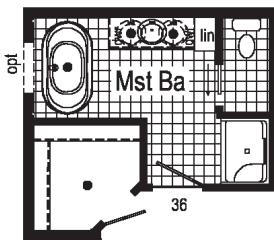
Charlestown



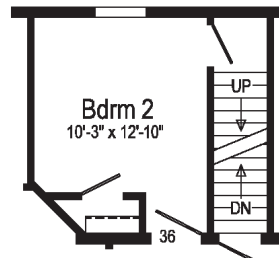
2P2017R

28x60/52 Approx. 1464 sq ft

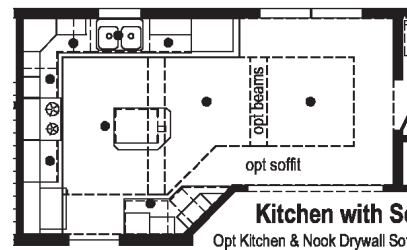
Some features shown may be optional or added on-site by others.



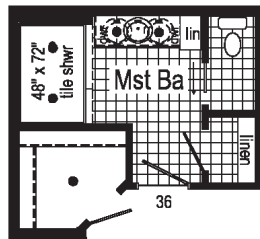
Optional Glamour Bath



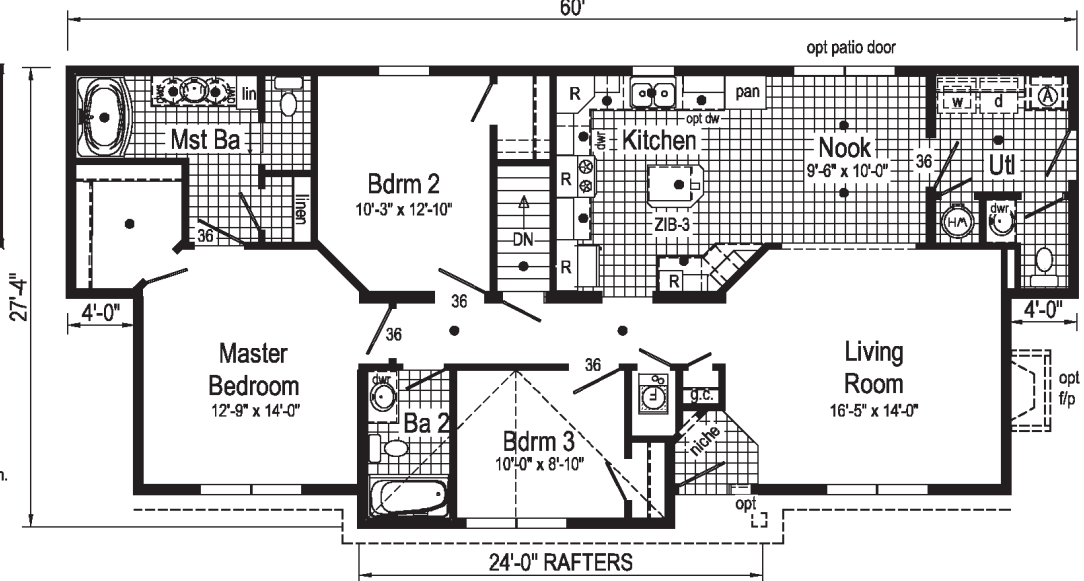
Opt Attic Stairs



Kitchen with Soffit
Opt Kitchen & Nook Drywall Soffit and Beams



Optional 4'x6' Walk-In Tile Shower



- = Std. can light
- Ⓐ = Std frz spc, opt utl sink or bench.
- R = Std. 30/36 staggered overhead

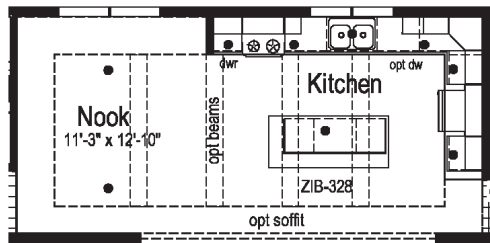
Hebron



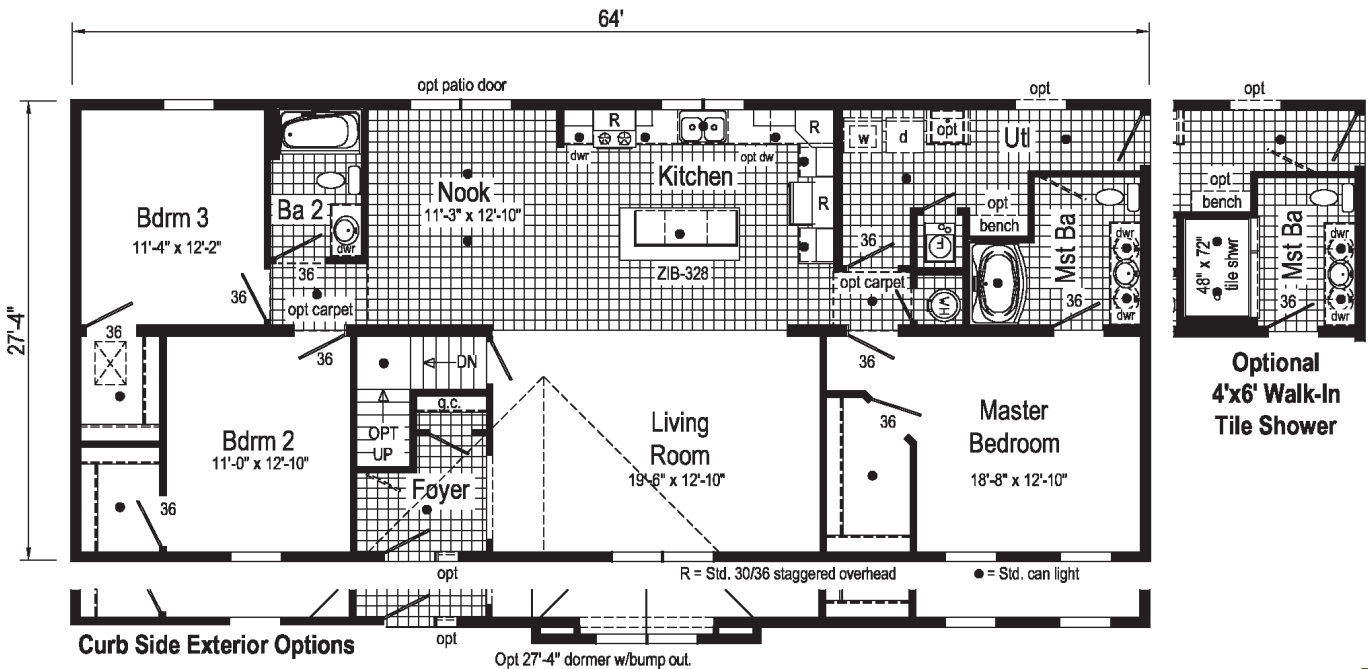
2P2018R

28x64 Approx. 1749 sq ft

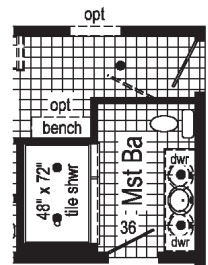
Some features shown may be optional or added on-site by others.



Kitchen with Soffit
Opt. Kitchen & Nook Drywall Soffit and Beams



Curb Side Exterior Options



Optional 4'x6' Walk-In Tile Shower

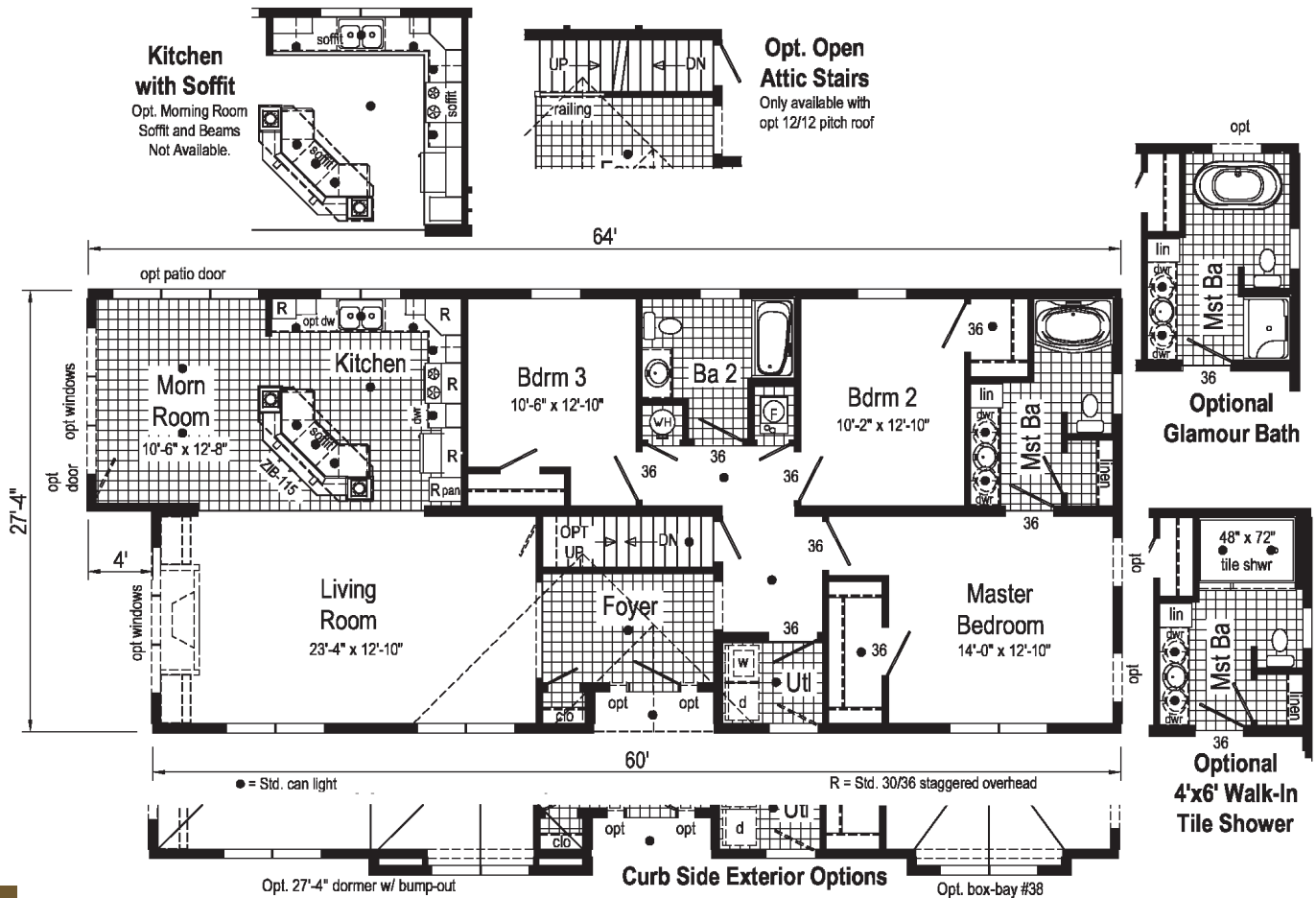
Washington



2P2019R

28x64/60 Approx. 1676 sq ft

Some features shown may be optional or added on-site by others.



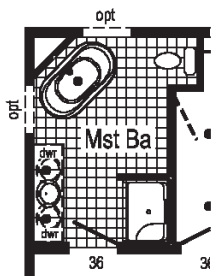
Bismarck



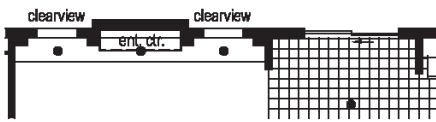
2P2021R

28x68 Approx. 1768 sq ft

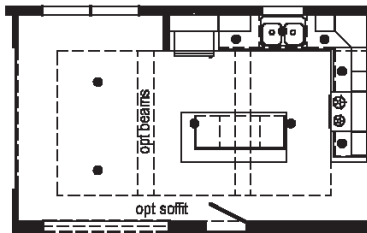
Some features shown may be optional or added on-site by others.



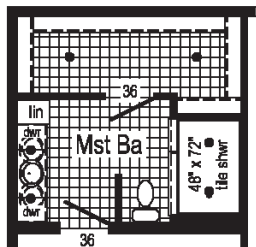
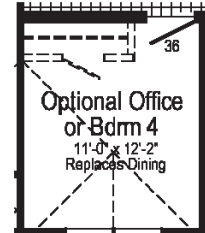
Optional Glamour Bath
(omits linen)



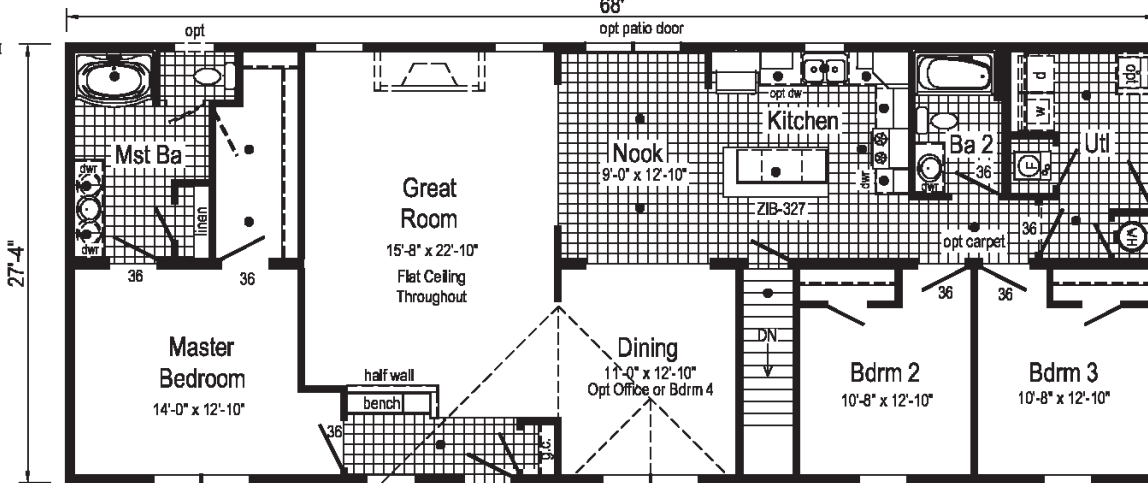
Optional Clearview Entertainment Wall
This option requires Optional Patio Door at Nook



Kitchen with Soffit
Opt. Kitchen & Nook Soffit and Beams



Optional 4'x6' Walk-In Tile Shower

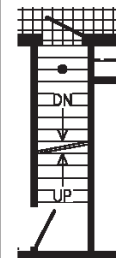


● = Std. can light

R = Std. 30/36 staggered overhead



Curb Side Exterior Options



Opt Attic Stairs

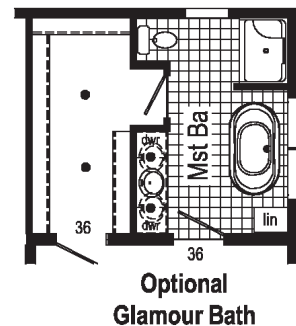
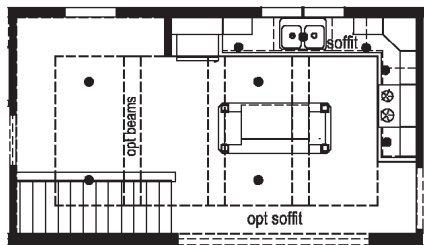
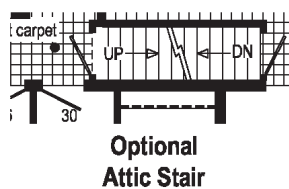
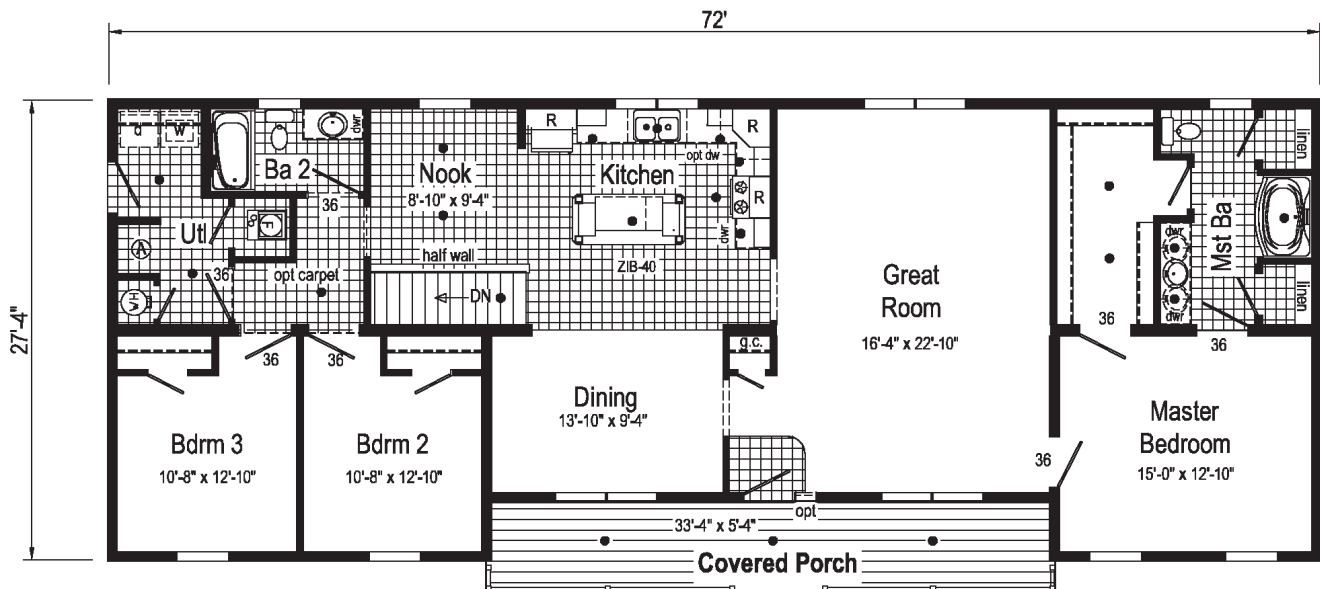
Carthage



2P2023R

28x72 Approx. 1852 sq ft

Some features shown may be optional or added on-site by others.



Branston



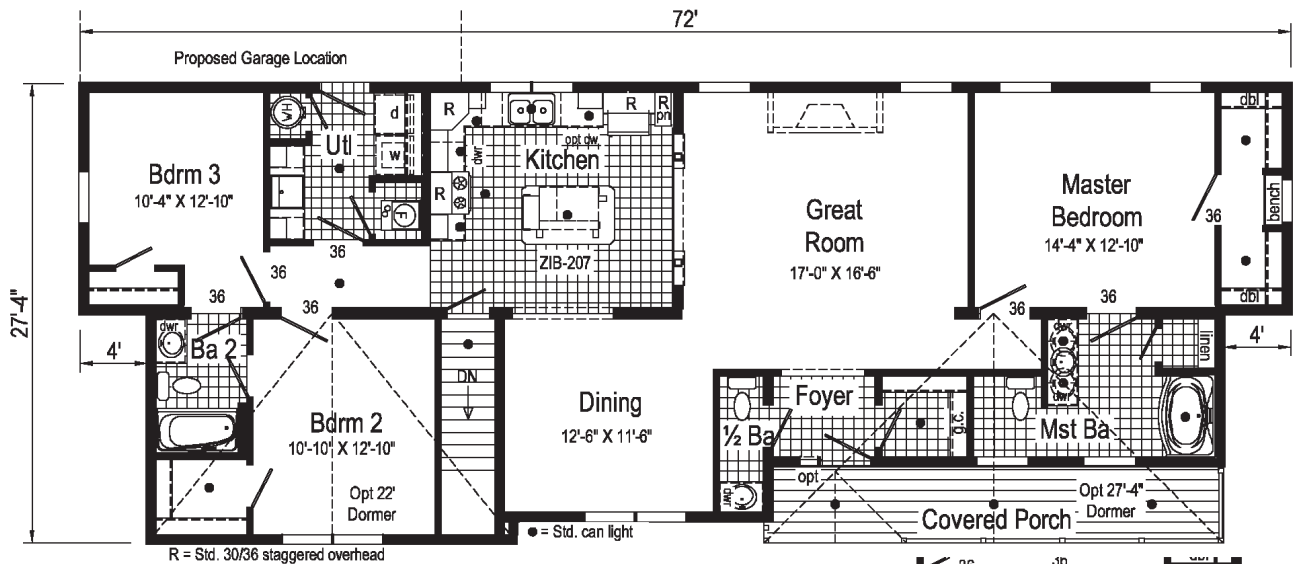
2015 MHI Best New Home Design Award for
Modular Homes 1800 Sq. Ft. or Less



2P2024R

28x72/64 Approx. 1704 sq ft

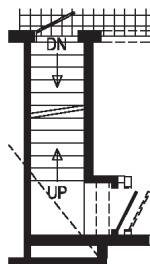
Some features shown may be optional or added on-site by others.



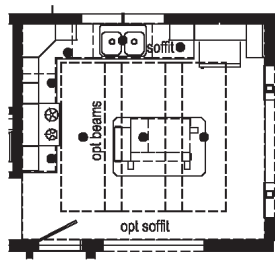
R = Std. 30/36 staggered overhead



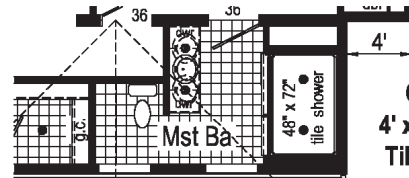
Scan to
Watch Video!



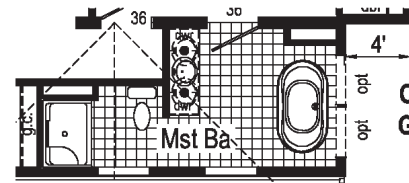
Optional
Attic Stairs



Kitchen with Soffit
Opt Full Perimeter Drywall Soffit and Beams



Optional
4' x 6' Walk-In
Tile Shower



Optional
Glamour
Bath

Reserve

29

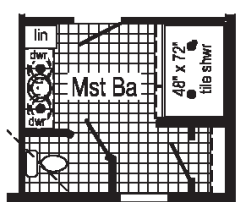
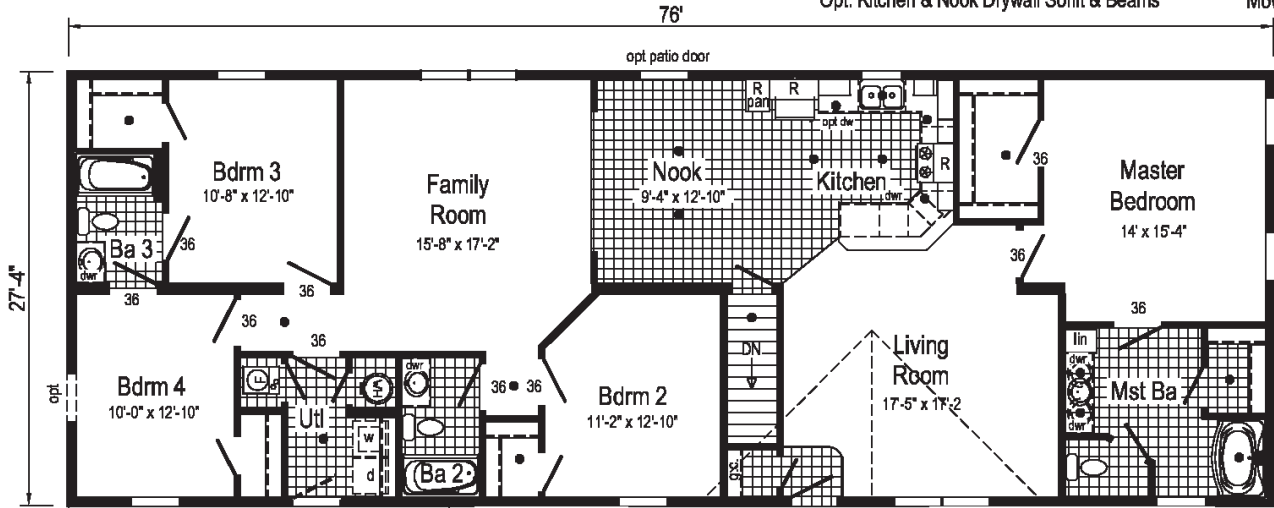
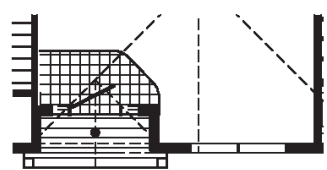
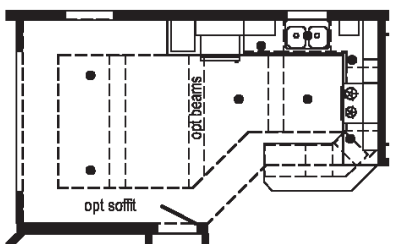
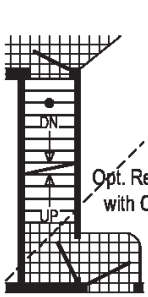
Vienna



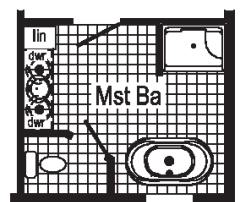
2P2025R

28x76 Approx. 2077 sq ft

Some features shown may be optional or added on-site by others.



Optional Glamour Bath
(omits closet)



SUGGESTED GARAGE LOCATION

SUGGESTED GARAGE LOCATION

Curb Side Exterior Options

Birchton

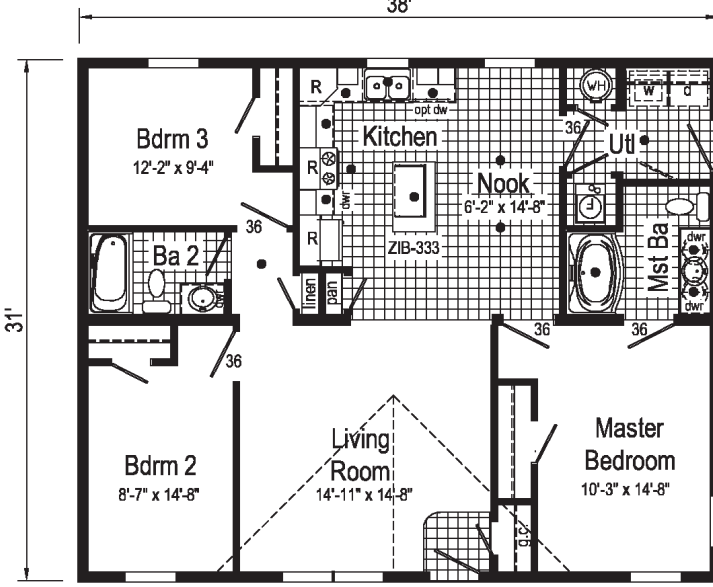
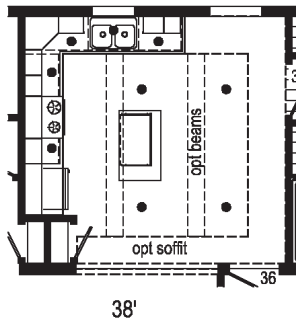


2P2026X

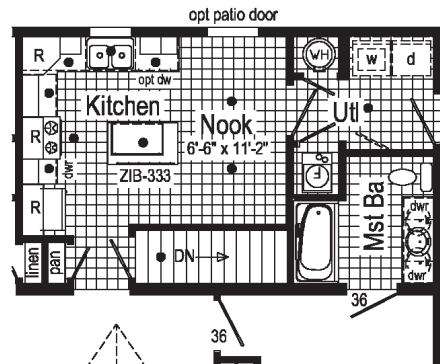
32x38 Approx. 1178 sq ft

Some features shown may be optional or added on-site by others.

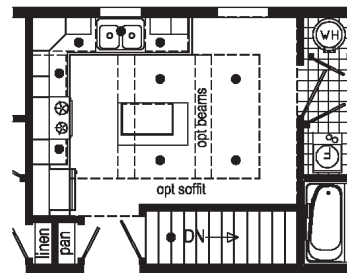
Kitchen with Soffit
Opt Kitchen & Nook
Drywall Soffit and Beams



● = Std. can light R = Std. 30/36 staggered overhead



Optional Stairwell
(rotates opt island & changes mst ba tub)
Optional Attic Stairs Not Available



Stairwell / Kitchen with Soffit
Opt Kitchen & Nook
Drywall Soffit and Beams

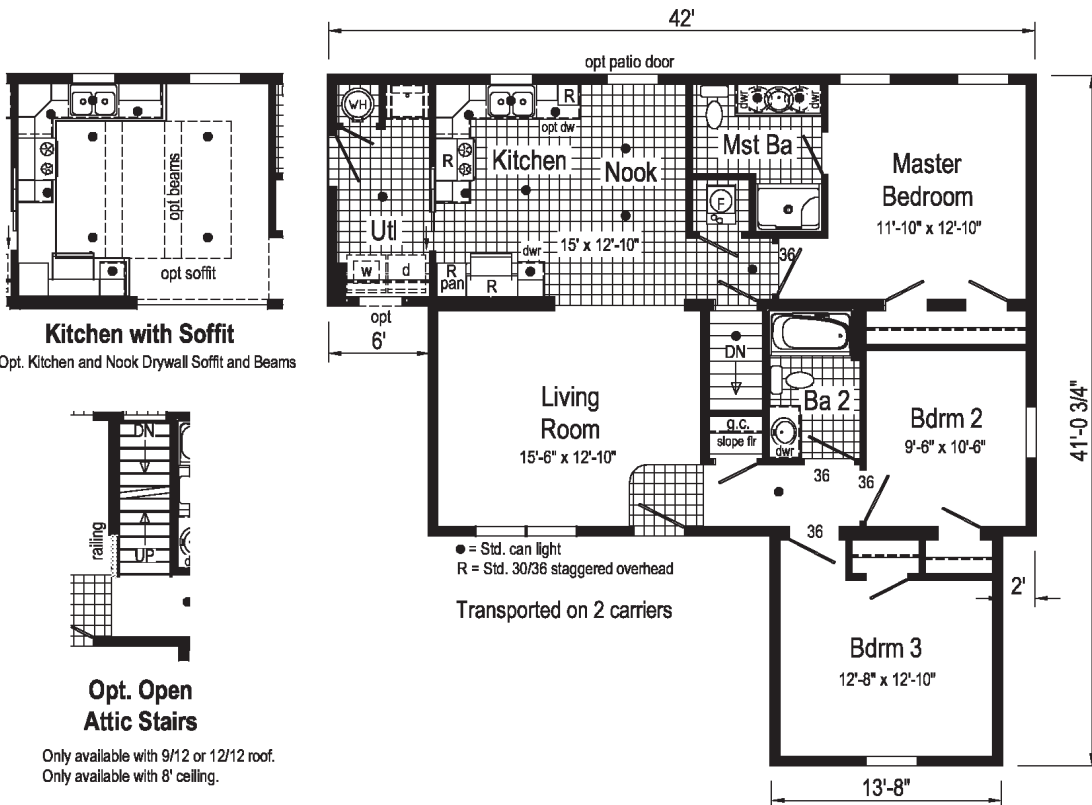
Goldsboro



3P2001R

42x42/36 Approx. 1253 sq ft

Some features shown may be optional or added on-site by others.



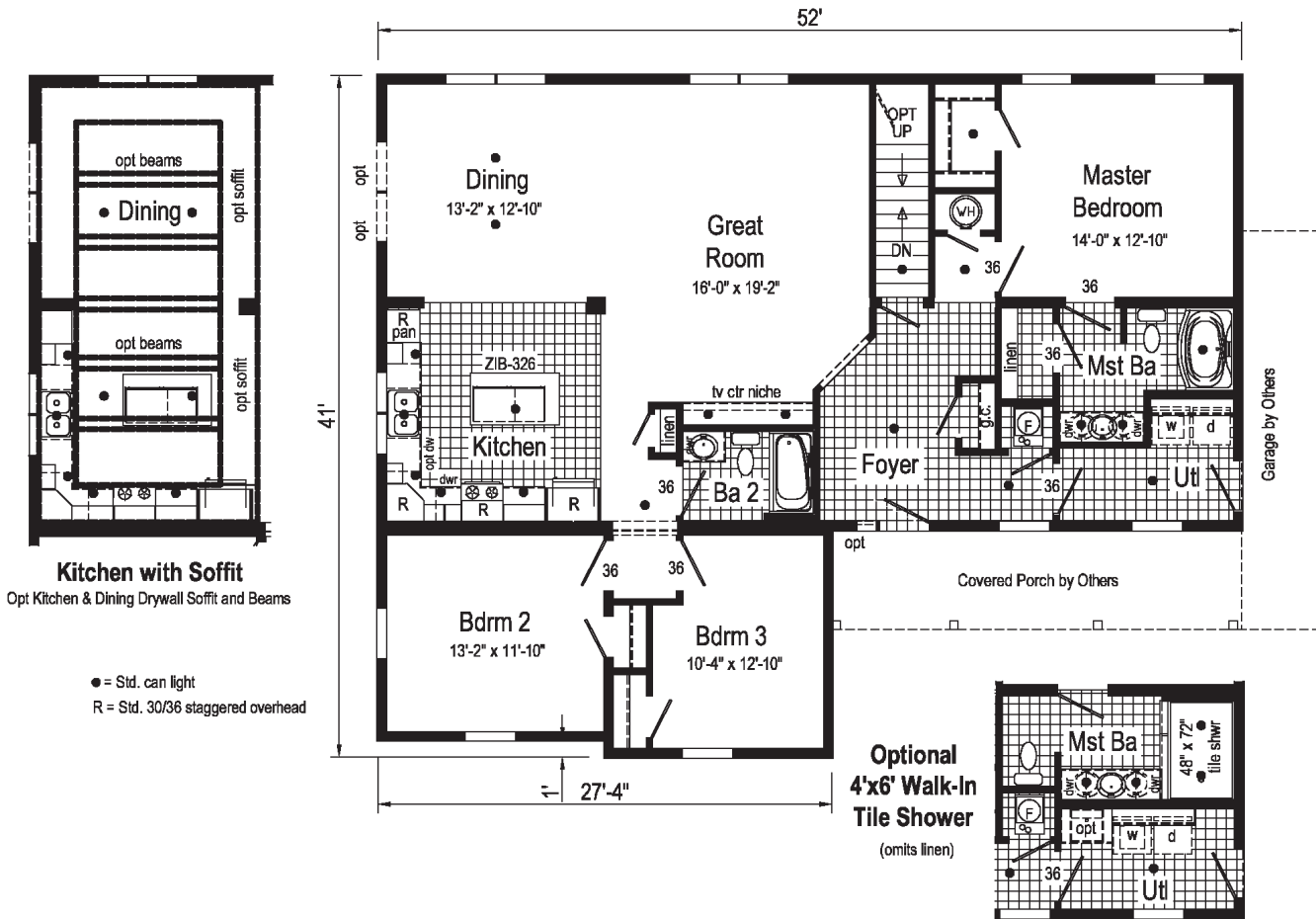
Sandalwood



3P2002R

42x52 Approx. 1781 sq ft

Some features shown may be optional or added on-site by others.



Hollingsworth



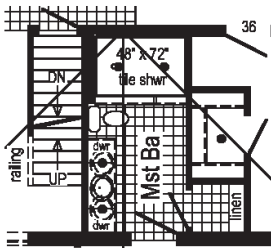
3P2003R

42x52/44 Approx. 1646 sq ft

Some features shown may be optional or added on-site by others.

Opt. Open Attic Stairs

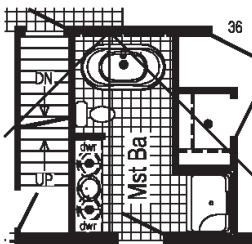
Only available with 9/12 or 12/12 roof (8' ceiling only) (omits g.c.)



Optional 4'x6' Walk-In Tile Shower

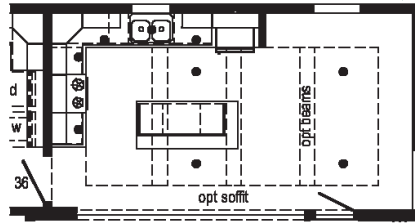
Optional Attic Stairs

(omits g.c.)



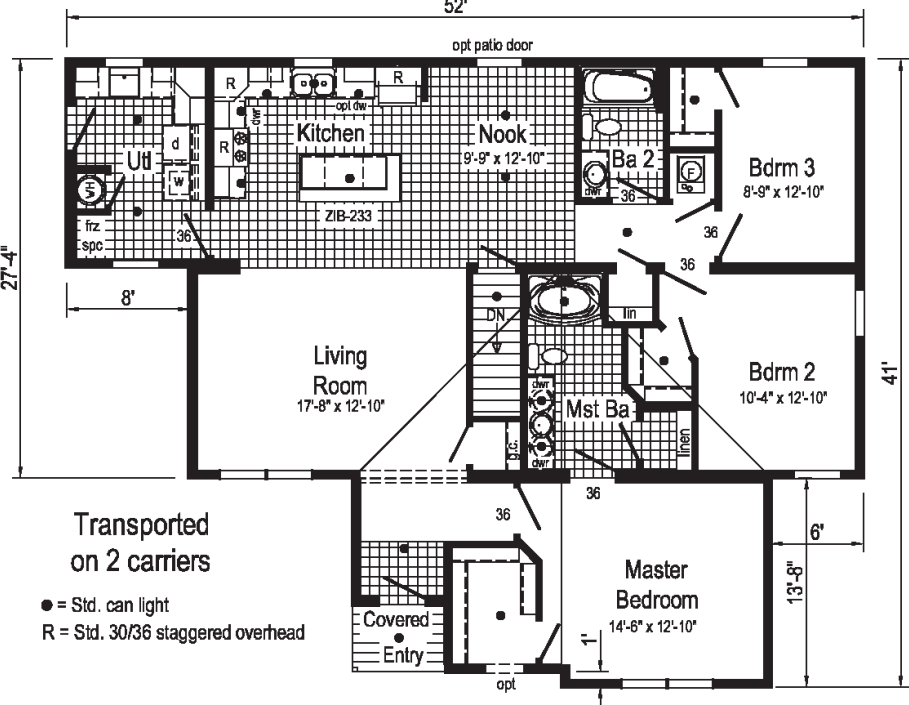
Optional Glamour Bath

(omits linen)



Kitchen with Soffit

Opt. Kitchen & Nook Drywall Soffit and Beams



Transported on 2 carriers

● = Std. can light
R = Std. 30/36 staggered overhead

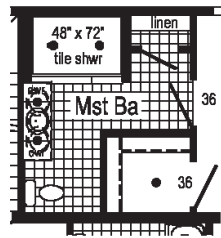
Chesterton



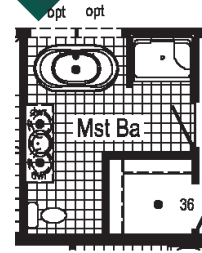
4P2001R

42x52 Approx. 1995 sq ft

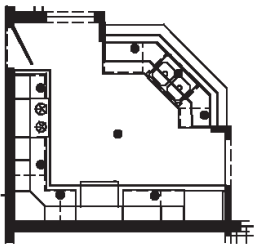
Some features shown may be optional or added on-site by others.



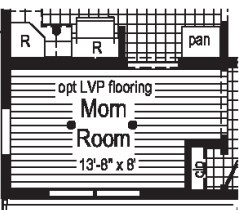
Optional
4'x6' Walk-In
Tile Shower



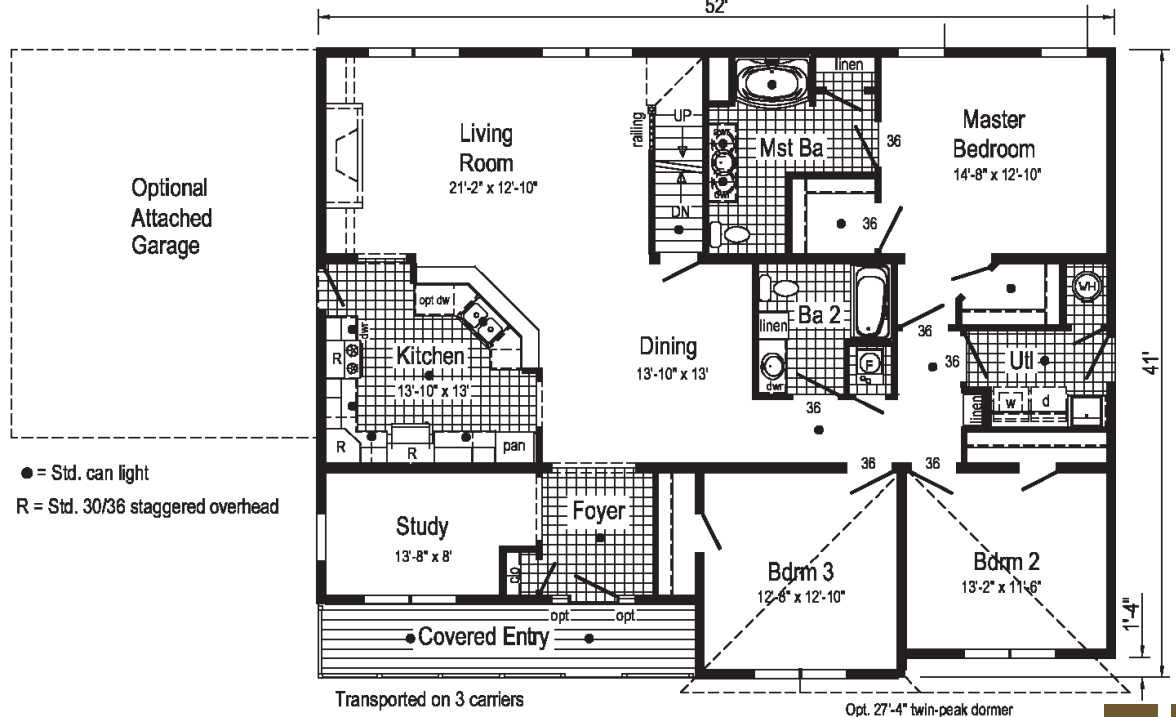
Optional
Glamour Bath
(omits lin)



Kitchen with Soffit
Optional full perimeter Drywall Soffit and Beams Not Available.



Optional Morning Room
Replaces Study





PENNWEST
reserve
R

CAPE

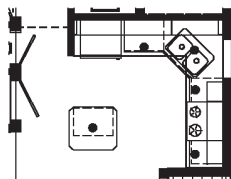
Nantucket



2PC2001R

**28x36 Main Floor Approx. 883 sq ft
Proposed Second Floor Approx. 561 sq ft**

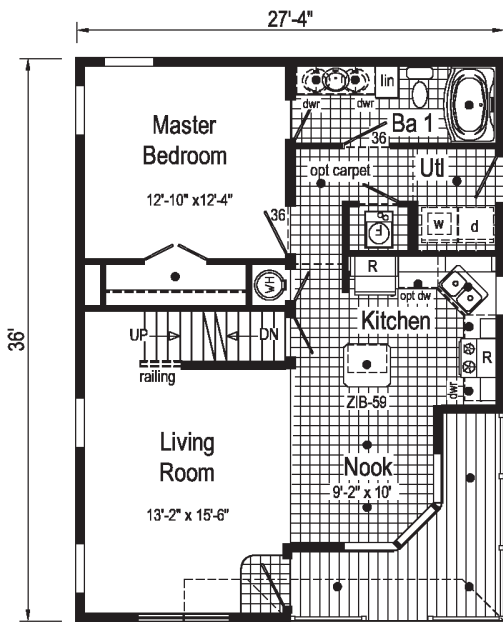
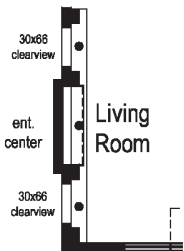
Some features shown may be optional or added on-site by others.



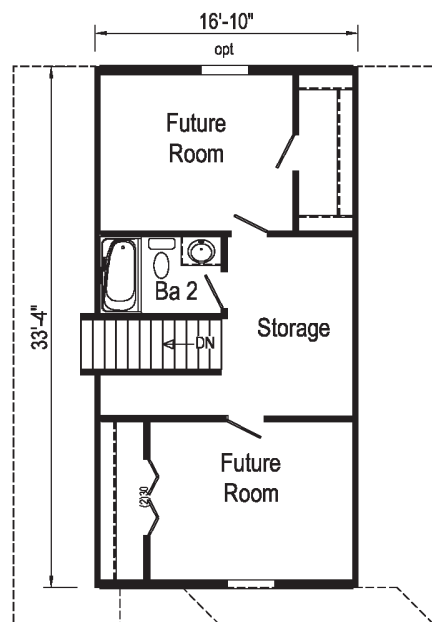
Kitchen with Soffit

Optional full perimeter Drywall Soffit and Beams at Kitchen & Nook Not Available.

Optional Clearview Entertainment Wall



MAIN FLOOR
Transported on 1 carrier



SECOND FLOOR

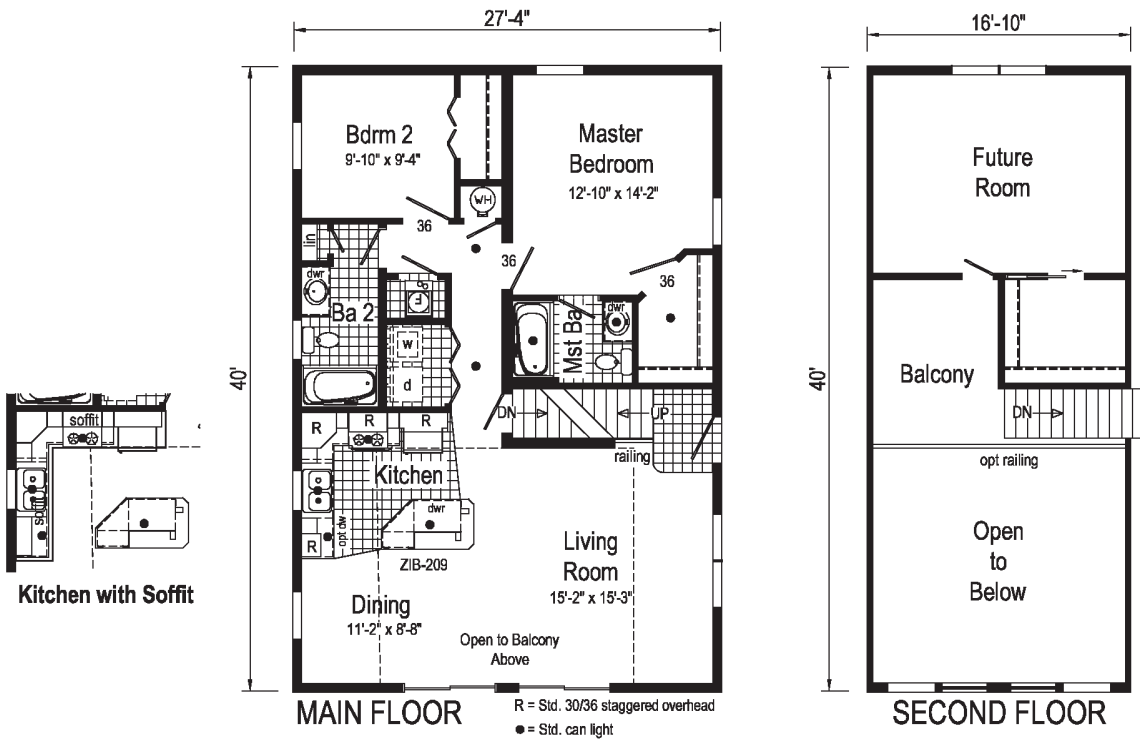
Bayshore



2PC2002R

**28x40 Main Floor Approx. 1093 sq ft
Proposed Second Floor Approx. 410 sq ft**

Some features shown may be optional or added on-site by others.



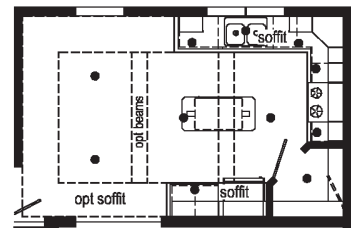
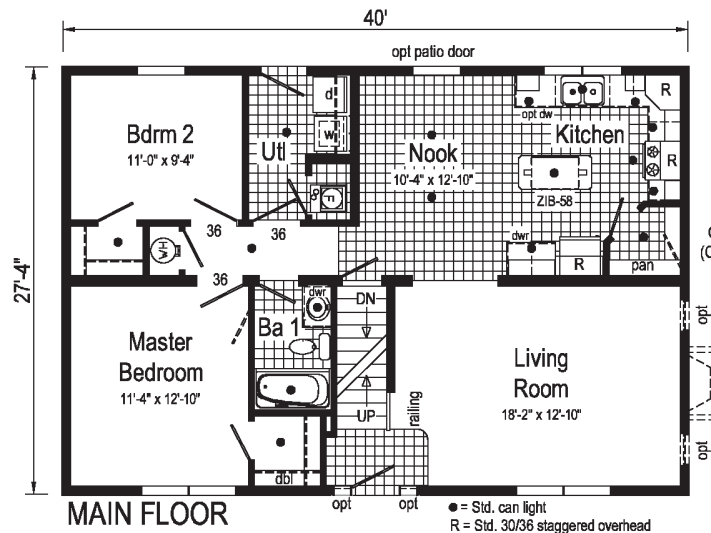
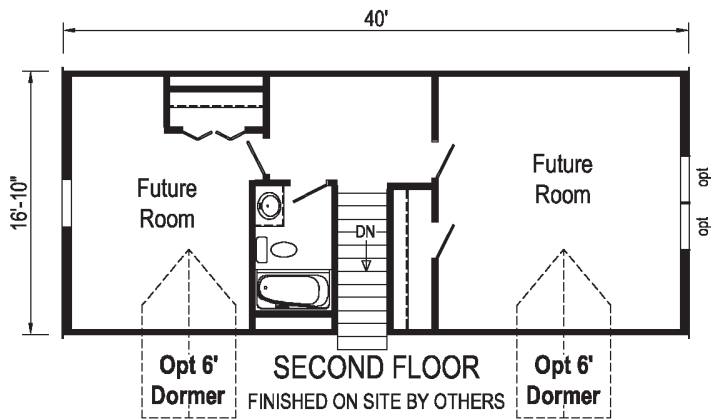
Wilmington



2PC2003R

**28x40 Main Floor Approx. 1093 sq ft
Proposed Second Floor Approx. 673 sq ft**

Some features shown may be optional or added on-site by others.



Kitchen with Soffit
Opt. Kitchen & Nook Drywall Soffit and Beams

● = Std. can light
R = Std. 30/36 staggered overhead

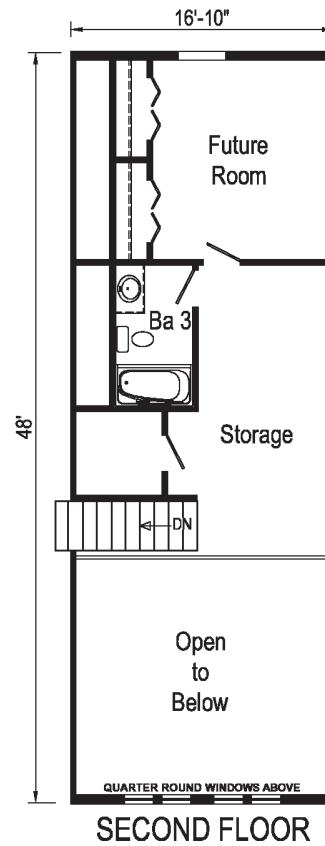
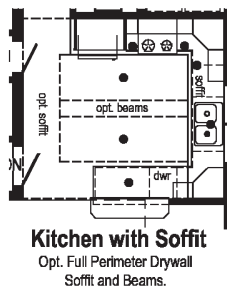
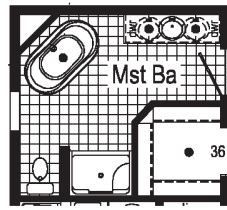
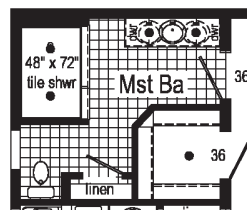
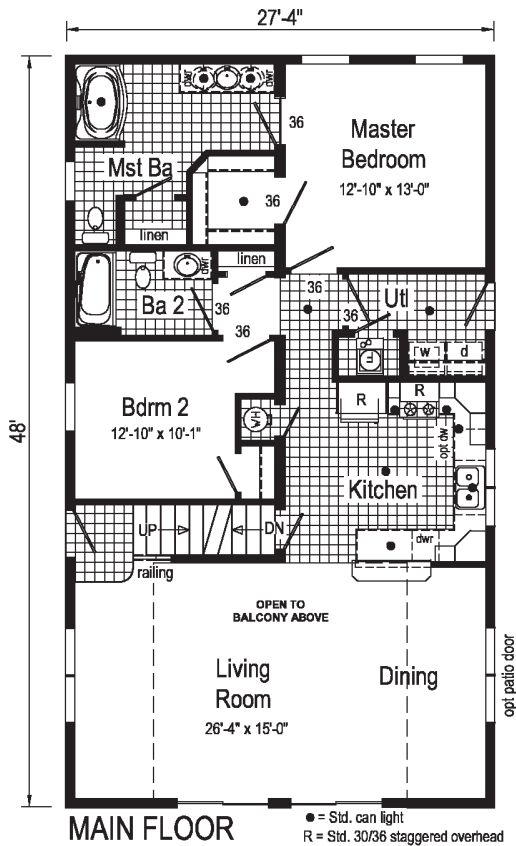
Bayview



2PC2004R

**28x48 Main Floor Approx. 1312 sq ft
Proposed Second Floor Approx. 546 sq ft**

Some features shown may be optional or added on-site by others.



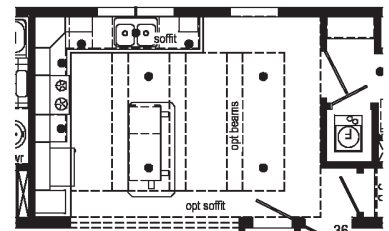
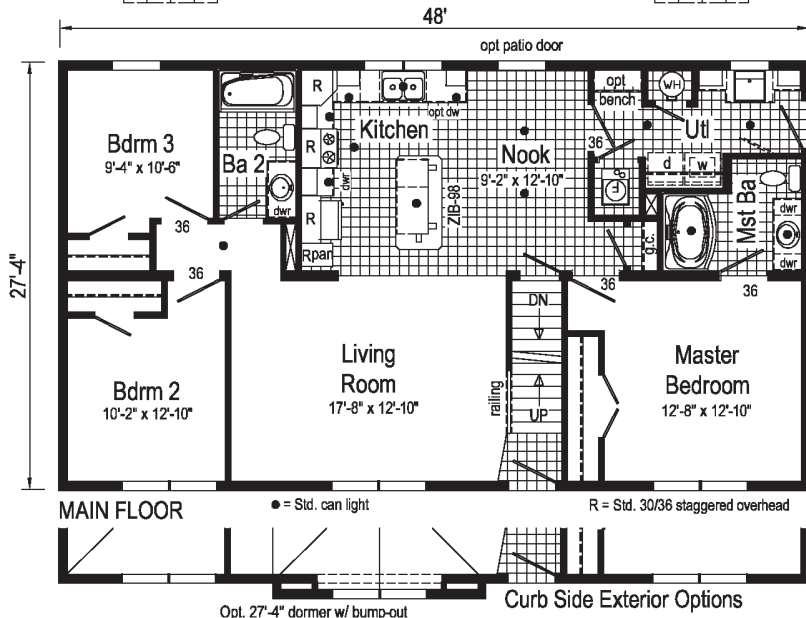
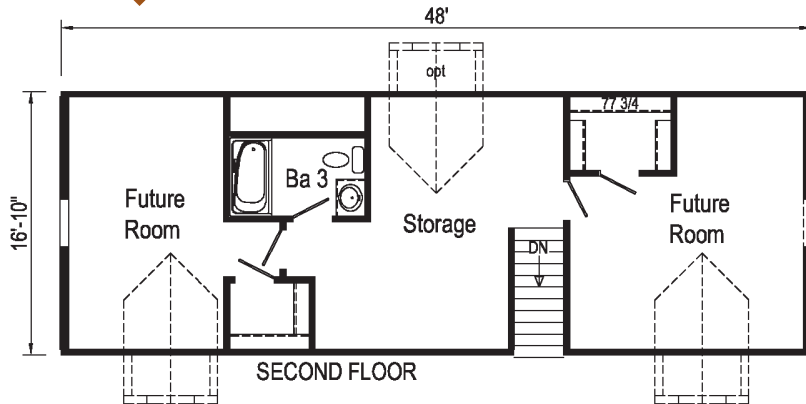
Norwich



2PC2005R

**28x48 Main Floor Approx. 1312 sq ft
Proposed Second Floor Approx. 808 sq ft**

Some features shown may be optional or added on-site by others.



Kitchen with Soffit
Opt. Kitchen & Nook Drywall Soffit and Beams

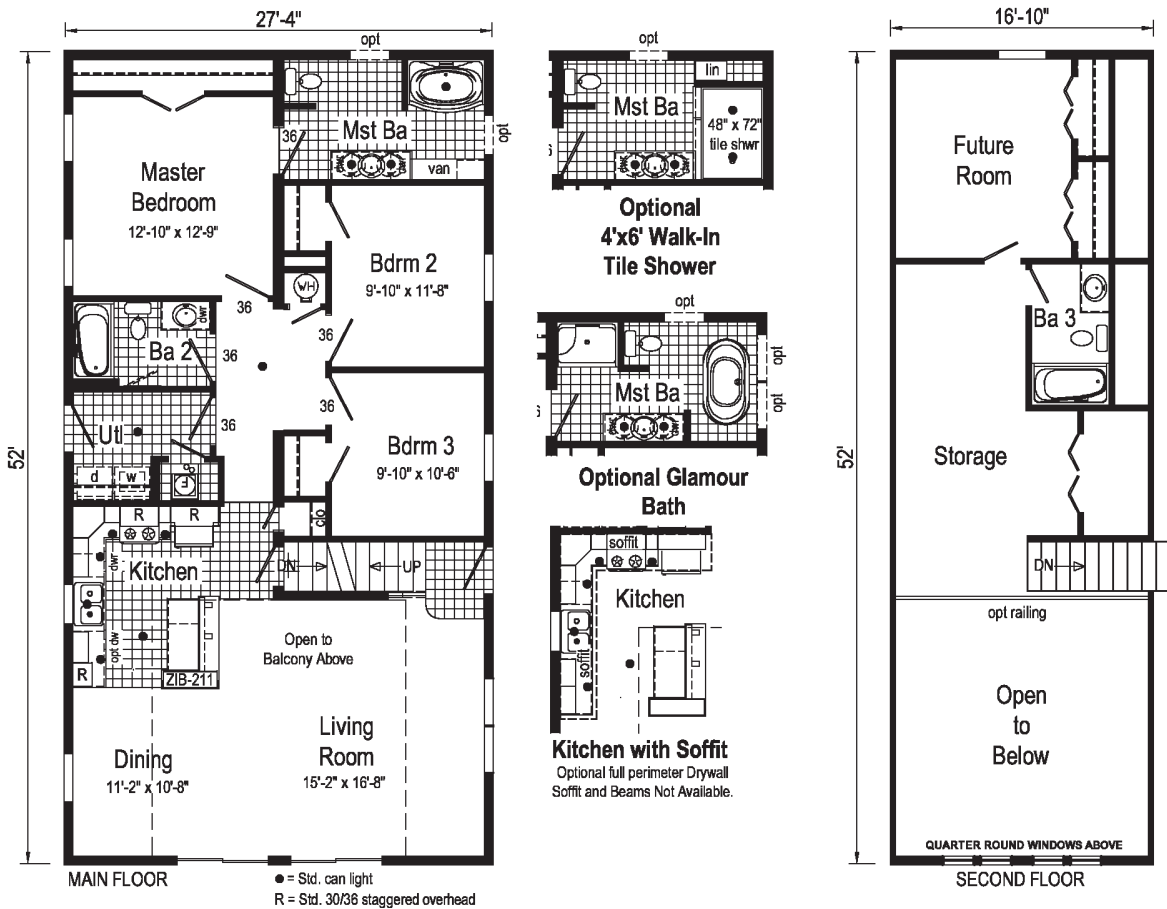
Baycrest



2PC2006R

**28x52 Main Floor Approx. 1421 sq ft
Proposed Second Floor Approx. 590 sq ft**

Some features shown may be optional or added on-site by others.



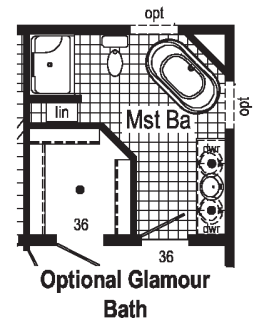
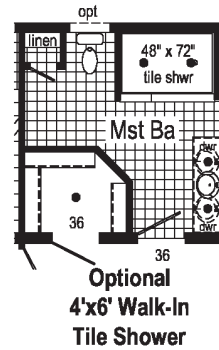
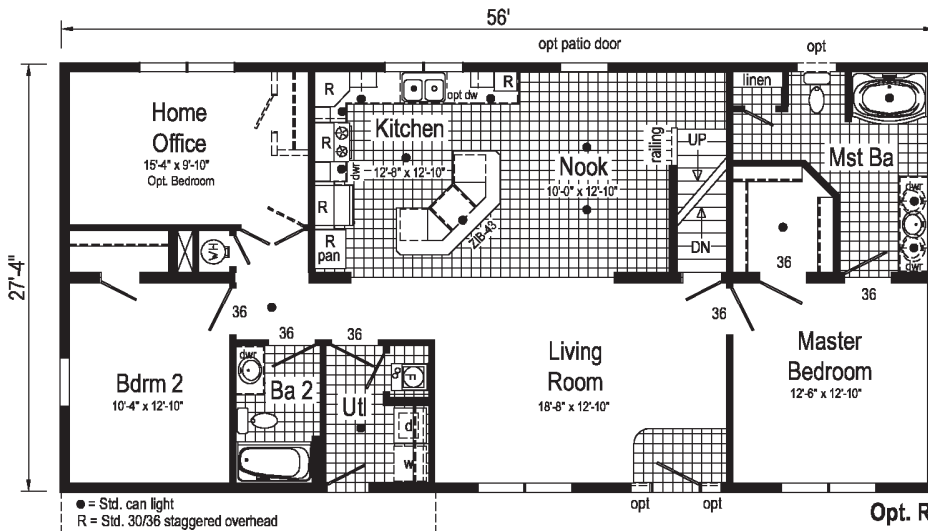
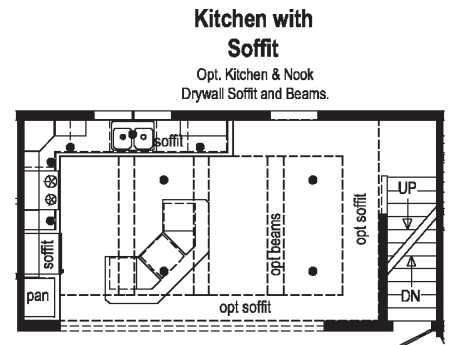
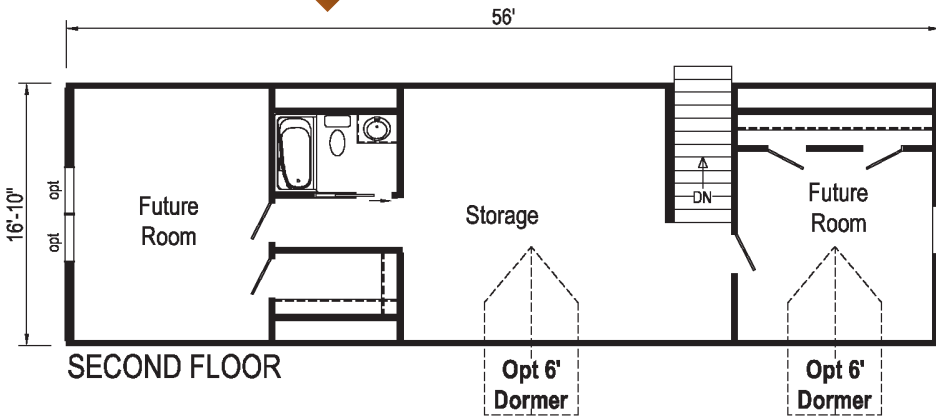
Livingston



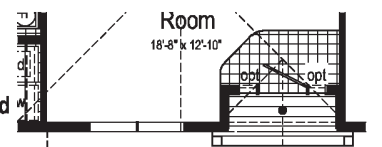
2PC2007R

28x56 Main Floor Approx. 1531 sq ft
Proposed Second Floor Approx. 943 sq ft

Some features shown may be optional or added on-site by others.



Opt. Recessed Covered Entry with Columns





Your Independent Retailer is:

Pennwest Homes
4 Pennwest Way Route 38
Emlenton, PA 16373
www.pennwesthomes.com

Connect with Us!



All descriptive representations of the products on this brochure are believed to be correct at the time of publication. However, due to continued product improvement and changes in suppliers design and production, accuracy cannot be guaranteed. Therefore, equipment colors, material specifications, prices and model availability are subject to change without notice. All information and images contained in this brochure are property of The Commodore Corporation and for the use by active dealers of the company only. © AP117715 5M 10/19